

## Township tax business is 'monkey business'

— see Editorial pg. 4

## Kids, play it safe with Police Dept. tips

— see Crimebreaker! pg. 6

## Mike Lamberti's annual NFL predictions

— see 'Buc Shots' pg. 11

# Belleville Times

77 Year No. 40 An Oregio Publication

Serving Belleville Since 1909

Thursday, September 11, 1986 35¢



**SUSPECT'S ARSENAL** - Police officials at press conference on the capture of Belleville crime spree suspect Frank Pennington, display the arsenal of weapons and ammo recovered at his hotel room in Newark. Pictured (l-r) are Essex County Prosecutor Howard Tate, Bergen County Prosecutor Larry McClure, and Essex County Sheriff Thomas D'Alesio. (Photo by Christopher Bifani)

## Belleville Police Commended

### Crime Wave suspect nabbed - and charged with Bergen murder

The Belleville Police Department was commended by Essex County Prosecutor Herbert H. Tate for their role in the investigation and subsequent arrest of a suspect in a crime spree which included three Belleville incidents.

Frank Pennington, also known as Frank John Dillinger, was arrested September 3 at 9:45 p.m. by Bloomfield Patrolman Joseph Graney after he was stopped on Bloomfield Avenue for allegedly making an illegal left hand turn.

According to county officials involved in the investigation, Graney spotted Pennington as a suspect in the crime spree after seeing that he fit the description of composite sketch released by Belleville Police.

Belleville Police became actively involved in the investigation following a series of armed robberies in the township.

On August 25, both Ron's Pub at 193 Washington Ave. and BJ's Tavern at 224 Washington Avenue were robbed at gunpoint. Then, on September 3, Krauser's Deli at 304 Belleville Avenue was robbed at gunpoint.

Pennington was subsequently charged with all three crimes.

In a continuing investigation, Pennington is also being charged

with a series of other crimes including the murder of Arlene Conners, shot to death in her tavern, Sarge's Place, in nearby East Rutherford.

At prestime, Jersey City Police were also seeking to link Pennington to incidents in that Hudson County city, while concurrent investigations further seek links to serious crimes in other states.

Pennington was residing at the time of his arrest at the Lincoln Motel in neighboring Newark. There, police recovered a virtual arsenal of weapons which included a total of eight handguns and several boxes of ammunition. These were displayed to the press at a special press conference at the Essex County Prosecutor's office, also in Newark.

Prosecutor Tate said that other nearby crimes Pennington has been charged with include armed robberies of J.G.'s Tavern in Newark and the Party Favor Store in Kearny.

Prosecutor Tate, in commending the role of the Belleville Police Department in the investigation, cited Deputy Chief Michael Petrillo specifically. Neither Belleville Police Chief George Lister nor Petrillo could be reached for comment at prestime.

By Christopher Bifani

## Zinna sworn in as judge

By Maureen Conway

Frank Zinna, former Belleville Township Attorney, was surrounded by the love of family and friends as he was sworn in as new municipal magistrate September 4.

A resolution to appoint Zinna passed unanimously September 3 during a special session of the Belleville Board of Commissioners.

Zinna succeeds Judge Edward Abramson who died in July after a long illness. Abramson serves as the municipal magistrate for the township for over 35 years.

The official swearing-in was done by New Jersey State Superior Court Judge William Camarata. Zinna's son, Michael, and Jason held the Bible as Zinna took his oath of office.

"I had to search my feelings before accepting the position," Zinna told a crowd of over 100 well-wishers. "I had mixed emotions about leaving a challenging position as township attorney, but

I am excited about the challenge of being the municipal magistrate."

After the administering of the

oath of office, Belleville Public Safety Commissioner Ralph DiRuggiero said, "He's such a good man, such a good friend, I

know he will be successful as our new judge. I'm sorry to see him leave the Board of Commissioners.

(continued on page 3)



**SWEARING IN** - Municipal Judge Frank Zinna, formerly the town attorney, is sworn in at last week's ceremony. Holding the bible are his two children as Commissioner of Revenue and Finance Joseph McGreevey looks on. (Photo by Maureen Conway)

## Commission appointments

### Cozzarelli attorney; Zampino assistant

Applause and cheers were heard at a town meeting for a change when the resolutions appointing Frank Cozzarelli as Township Attorney and Thomas Zampino as Legal Assistant were approved by the Belleville Board of Commissioners September 9.

More rounds of applause rang out through the auditorium of about 400 meeting goers when resolutions congratulating three retiring employees were unanimously approved.

Municipal employee Frank Rovelli, retiring after 50 years of service to Belleville, Deputy Chief James G. Mundy of the Belleville Police Department, and Captain Robert Russo, also of the police department, all received polite applause from the assembled crowd.

But there the cordiality stopped. During the public hearing portion of the meeting — switched to the end of the meeting by the board — irate citizens repeatedly stepped up to the podium to protest the .87 point tax increase levied on Belleville homeowners this year.

Frantantoni, Marotti exchange words

Vincent Frantantoni, president of the Concerned Citizens of Belleville, Inc.; said, "No one likes to pay more taxes, but this tax in-

crease was the result of incompetence and poor management by the board of commissioners."

What followed was a heated verbal exchange between Mayor Michael Marotti and Frantantoni. "You'll have your chance in May, Vinnie," the Mayor said, indicating that he believes Frantantoni may run for a commission set in the May 1987 municipal election.

Later, Frantantoni criticized the mayor for his "arrogance," saying that Marotti acted as if he believes he cannot be "toppled" in the upcoming election, some nine months away.

"I may not be here to be toppled," the Mayor replied, indicating that he may choose not to run.

**Cost of \$10 million plan questioned**

One citizen took the podium with a specific question, one which the board did not specifically answer.

"How much was actually spent on the original \$10 million dollar municipal complex architect fees, engineering fees, everything?" the citizen asked.

Mayor Marotti said he would make the information available "to reporters" at some later time, but the Concerned Citizens of

Belleville — and their ever-present facts and figures — supplied their figures which they allege come from town documents.

According to Frantantoni, the amount of money spent on the ill-fated municipal "edifice" was \$369,769.06 — of which some \$224,000 went directly to the firm of Beckhardt-Richlin, architects and some \$32,000 to Neil Schiano, engineer.

Frantantoni said this cost alone added between 9-14 points to every homeowner's tax bill, a revision of an 8.11 point increase he told to the Times earlier in the

(continued on page 15)

## CCB claims attorney Zinna has yet to reply to charges of commission mismanagement

By Christopher Bifani

Amidst the enthusiasm and well-wishing surrounding former municipal attorney Frank Zinna's promotion to municipal judge, is an undercurrent of resentment from many citizens over his role in the municipal complex fiasco.

The Concerned Citizens of Belleville, led by Vincent Frantantoni, has charged that Zinna has yet to reply to legal correspondence sent via registered mail two months ago.

In that correspondence, Frantantoni said the attorney was called upon to reply to two key charges.

The first charge is that the planning board was not included in the planning of the ill-fated complex. Although Zinna told the Times he believes the planning board was "notified," both

planning board chairman Joseph Doyle and planning board secretary Grace Harris have said publicly they were not notified, nor were the plans sent to them for review before they were approved by the board of commissioners.

The second charge refers to the board's July resolution which amended the original \$10 million municipal construction bond to \$5 million. Frantantoni said that ordinances can only be amended by other ordinances, not resolutions. The difference is

that ordinances can be contested by referendum. Resolutions can not.

Frantantoni cited a similar case where a judge ruled that the Borough of Telford could not amend an ordinance by resolu-

tion. However, Zinna indicated that since the case was in Bergen County, it may not have bearing here in Essex.

But the Concerned Citizens president claimed that it is a

(continued on page 3)

## Site plan for police station is reviewed at work session

By Christopher Bifani

The site plan and architectural design of the long-awaited Belleville Public Safety Building was approved unanimously by the board of commissioners in a "work session" meeting last week, architect Frank Richlan said.

Estimated cost for the project is now estimated at \$4.4 million, with \$3.7 million going to construction, landscaping, furnishings and police equipment. The remaining \$700,000 is the estimated cost for architectural, engineering, and other fees and costs.

Engineer Neil Siciliano, who is receiving a large portion of the \$700,000 for his firm's role in the project, said the plan will possibly be able to go out to bid in "three to four months."

This assessment is in agreement with architect Richlan's prediction

that a bid could possibly be awarded in January of 1987, with a finished, ready-for-crimefighting building open by the summer of 1988.

The site plan, which Richlan requested not be published pending "better practices" at the end of the month, shows the building at the corner of Belleville Avenue and Cortlandt Street, separated from Town Hall by a 26 car police parking lot and trees.

**Concerned Citizens skeptical of size**

The Concerned Citizens of Belleville, Inc., a group which successfully fought the board's original \$10 million plan, has followed up that protracted battle with an investigation into the needs of the police station.

The group believes that if the building is smaller than the ap-

proved 24,000 square foot size, it will cost the township less.

Vincent Frantantoni, CCB president, told the Times the original police station, in the basement, is only "about 6,000 square feet. How can they justify a quadrupling of size?"

But Richlan maintains that the amount of space being used by the police station is actually far greater than 6,000 square feet.

"Frantantoni's estimate appears to be in error," Richlan said.

Richlan said that in figuring the square feet of Town Hall used by the Police Department, one would have to include the Court, the law department, and common areas such as laboratories and stairwells. He said the space the police station occupies in Town Hall is

(continued on page 3)

## 'Ask a Lawyer' continues

Registration is still open in the "Ask a Lawyer" Series presented by the Essex County Bar Foundation at the Belleville Public Library, 221 Washington Avenue, on Monday evenings at 7:30 p.m. from September 15 to October 6. A different lawyer will preside at each session.

The September 15 series discusses the entire process of buying a home, the September 22 series with going into business, the September 29 series with family law, and the October 6 series with wills, trusts, and estates.

Registration is required for each session by calling the Circulation Desk of the Belleville Public Library or registering in person at the Library. There is no charge for the law series. For further information, call Adrea Cohen or David Bryant at the Belleville Public Library, 759-9200.

## Contents:

Belleville briefly	2
Editorial	4-5
Crimebreaker!	6
Service news	6
School news	7
Events in the area	8
Social news	9
Sports	11-12
Classified	16-19

# BELLEVILLE briefly...

## Township help center offers new program for drunk drivers

Marriage and Family Counseling Center, located at 318 Greylock Parkway in Belleville, was recently approved by the State of New Jersey as an out-patient center for their Intoxicated Driver Program. The center draws clients for this program from Belleville and throughout Essex County.

In addition to treating alcohol problems, the Center also works with individual, marital and family problems. The staff at the center is comprised of all licensed professionals.

The center operates using a sliding fee scale and accepts all types of insurance.

Appointments can be made at the Counseling Center, often on very short notice, by calling 759-3388.

## Bellevillite wins 5G's

A Belleville man has won a top cash prize of \$5,000 in the New Jersey Lottery's Baseball '86 instant game.

Lottery Executive Director Joan Zielinski announced that the winner is Dominick Ricotta, 75, of Belleville. A widower, he retired in 1974 after 30 years as a machine operator for General Motors in Clark.

Ricotta said he bought five Baseball '86 tickets at Nino's Candy and Cards in Belleville and one was a big winner. He said he would put the money in the bank.

Baseball '86 provides two ways to win a full range of instant cash prizes of \$5,000, \$500, \$50, \$20, \$5 and \$1 and bonus cash prizes of \$50, \$25, \$10 and \$5.

**Troise Insurance Agency**  
**INSURANCE POOR?**  
Many Discounts Available  
Truck - Auto - Life - Homeowners  
Tenant Insurance  
Free Computerized Quote  
Personalized Service  
759-4100  
Mon-Tues-Wed-Fri 9am-5:30  
Thurs-Open Late  
Sat. By Appt. Only  
172 WASHINGTON AV. BELLEVILLE



## Belleville beauties wanted!

Final call for 1987 Miss New Jersey USA contestants.

Miss New Jersey USA 1987 will close registration on September 20 for participation in the state pageant to select the Garden State representative to the CBS nationally televised Miss USA Pageant finals, produced and staged by Miss Universe, Inc., a subsidiary of Paramount Pictures.

The Americana Great Gorge Resort, in McAfee, New Jersey will host the three day event, beginning Friday, November 14-16, 1986. The show will take place in the Cabaret for the fourth season.

Performing talent is not a requirement.

Judging is based on beauty of face and figure, pose and personality in three equal categories consisting of personality interview, evening gown and swimsuit presentation.

Applications are still being accepted from eligible single women, over 17 and under 25 years of age prior to February 1, 1987. U.S. Citizens and state residents (dormitory accepted).

Special awards will be given to Miss Amity. The pageant also includes "self enhancement" seminars.

In addition to the all expense paid opportunity to represent the state at the national telecast, state prizes include \$1,000 cash, a Flemington Fur jacket, a walk on appearance on the ABC TV soap opera "Ryan's Hope", and many more prizes.

Lesla Summerour Perry, 23, of Abescon, New Jersey will crown her successor.

All requests for information must include a recent photo, short biography with telephone number and address. Write to: Miss New Jersey USA Dept. P, P.O. Box 834, East Brunswick, N.J. 08816.



## Kelly introduces hazardous research bill

John V. Kelly, Assemblyman of the 30th Legislative District, has introduced legislation which would authorize the use of monies of the New Jersey Spill Compensation Fund to be used for research on methods of recycling and detoxification of hazardous substances.

Kelly said, "The present Spill Fund Compensation and Control Act allows monies to be used for research for the prevention of spills only in the ocean, and for improved cleanup and removal operations. This legislation would allow Spill funds to be used for research in responding to hazardous discharges, but, also for the disposal, recycling, and for removal of the toxicity of waste which is actually produced in a spill. Hazardous waste is a reality and New Jersey must be prepared to deal with it."

Assembly bill 2546 is currently before the Assembly Environment Committee.

## Friends of Library to meet

The next Friends of the Library program will take place at 7:30 p.m. on Thursday, October 9, 1986, featuring Dr. Susanne Stratton of the Art Department of Rutgers College of Arts and Sciences, who will provide a slide lecture program on Italian art and culture which will run about forty five minutes in length.

The program is open to the public. Call the Library at 759-9200 to register for the program.

The Friends of the Belleville Public Library have announced their newest Library fundraiser - a canvas tote bag featuring a handsome portrait of the original Carnegie Library. The bags are made of heavy cotton duck in a natural off white color, with the library image in navy blue.

The bags measure 17 inches by 15 inches and sell for \$7.50. The purchase of each bag is deductible and profits from the sale will go to much needed library projects. The bags are for sale at the Main Library at 221 Washington Avenue and at the Silver Lake Branch at Number Four School on Magnolia Street.

## Belleville schoolchildren complete reading program

Thirty-five fifth and sixth graders from the Belleville schools made a big difference in the Summer Reading Program, "Celebrate Books", which concluded last month in the James J. Cozzarelli Jr. Children's Room of Belleville Public Library.

The following children helped run the Summer Reading Club desk, assisted with arts and crafts supplies, shelved books, participated in two puppet shows and a play for the Summer Reading Club final parties, and performed many jobs gladly and willingly when asked.

Shannon Arguello, Shannon Anderson, Danielle Buchanan, Serafino Berardi, Ketan Chauhan, James Cienfuegos, Alan Constantino, Maria Corona, Valerie Delece and Vivian Della Vecchia.

Also, Kim D'Achille, Tam Deleva, Johanna Duhamel, Sandi Gabrielle, Lisa Galkoway, Anna Gencarelli, Lee Grzywinski, David Hagedorn, Dorothy Hayducka, Kristen Jacobs, Adrian Modrzewski, and Stefanie Nieszkowski.

Also, Laura Nenninger, Ahann Narciso, Joanna Naresno, Darlene O'Hara, Bhavin Patel, Nikhil Patel, Virginia Raines, Carlos Ramirez, Elizabeth Ramirez, Jennifer Schind, Susanna Teener, Crista Trippodi, John Walters and Jennifer Zamora.

## Before you paint yourself into a corner, call us.



**M & K CAB**  
35 Franklin Ave. Nutley  
  
\$2.50 Local Rate  
Flat Rates Out Of Town  
  
CALL 661-4000  
Open 7 Days  
Prompt & Courteous Service

**Century 21**  
**FIRST CENTURY**  
REAL ESTATE  
692 Passaic Avenue  
Nutley, New Jersey 07110  
235-0440  
EACH OFFICE IS INDEPENDENTLY OWNED AND OPERATED

18851886

101 Years of Uninterrupted Dividends

**LOWER  
NEW CAR  
RATES?**

**2.9  
2.5  
2.4**

**TAKE THE REBATE INSTEAD  
AND GET A BETTER DEAL WITH  
FIRST DeWITT!**

We can give you better, faster, friendlier service and still save you money. By combining the substantial rebates that automakers are offering with First DeWitt's low auto loan rates, we can actually save you money, right now, month to month...and year to year! Call our Auto Loan Department today for the details.

**8.75% APR...36 mos.**

**NEW CARS ONLY - LIMITED TIME ONLY!** And you don't need an account with us to qualify.

**FIRST DeWITT SAVINGS**  
AND LOAN ASSOCIATION

BELLEVILLE • BLOOMFIELD • CEDAR GROVE • HOPATCONG  
WEST CALDWELL • BRICKTOWN • PARSIPPANY



TELEPHONE **751-2800** ALL OFFICES


**ORGAN CLASSES  
NOW FORMING**



for  
Beginning Adults

**7 WEEKS OF  
INSTRUCTION**

**\$9.95**  
ONLY Includes all materials

MAKING MUSIC FOR FUN AND RELAXATION

No hobby offers so much joy as playing a musical instrument. If you've secretly wished you could make your own music this is your opportunity. Enroll now and we'll have you playing in 7 weeks!

All music, instruction, and private practice facilities are included in the small fee. ENROLL NOW - PHONE OR VISIT OUR ORGAN DEPT. (You need not own an organ.)

**Baldwin - Hammond**  
PIANOS  
**Music Center**  
ORGANS  
507 BLOOMFIELD AVE. MONTCLAIR • 744-1200  
(OPEN DAILY)



# Zinna appointed new judge

(continued from page 1)

but I'm happy he is our new judge."

Department of Public Works Commissioner Joseph Grande praised Zinna as being a "very, special man, a man that will make our township proud."

Commissioner Joseph McGreevy expressed his hopes that Zinna will remain judge for as long as he stays here.

According to the New Jersey State Municipal Code, municipal judges are appointed by the governing body of a municipality for a term of three years. There is no limit to the amount of times one magistrate may be appointed.

Mayor Michael Marotti told the crowd of his long affiliation with Zinna and praised his devotion to the township.

"I've known him, throughout Little League and as a member of the Belleville High School football team," Marotti said. "He's devoted eight years to the township as our attorney, his appointment is a great loss to the Board of Commissioners and is a great asset to the municipal court."

Marotti jokingly tried to clear

up a matter of protocol with Judge Camarata.

"Am I allowed to beat a judge in golf?" Marotti asked. "I could always beat him when he was township attorney, but what happens if I beat him now?"

Judge Camarata told Marotti he was allowed to beat Judge Zinna as long as the game was kept quiet.

When it was Judge Zinna's turn to speak, he thanked one and all for their love and support.

"I really didn't have a chance to invite anybody. I'm amazed at the turnout on such short notice," Judge Zinna said.

Judge Zinna recognized the help and efforts of assistant township attorney Frank Cozzarelli "for all his help, hard work and patience."

Township Clerk Mary Lou Hood was praised for being "a fountain of knowledge about the township."

Township Court Clerk Cheryl Chapponechi was commended by Judge Zinna for running the court efficiently.

"I know, thanks to her hard work and devotion, my transition will be easy," he said.

The Judge saved much of his thanks for the love and support of his family.

"My father commuted to Rhode Island to work so that the family could stay in Belleville," Zinna said. "He sacrificed so much to make us happy. I could never thank him enough."

Zinna told the crowd that each person has two marriages in their lifetime.

"I'm lucky that both my job and my wife are beautiful marriages," he said.

Zinna's sons, Michael and Jason, were noted by their father as two of the most influential factors in his new career.

"Settling their disputes has prepared me for my new position," Judge Zinna said.

Zinna was born and raised in Belleville. He attended Seton Hall University and graduated in 1972.

He told the audience to have Judge Camarata administer his oath of office was extra special because his first job out of law school was as a clerk for the state superior court justice.



**Borrowed time** - This house at the corner of Valley Street and Belleville Avenue, ambitiously called the Public Safety Annex, will be demolished to make way for the forthcoming Public Safety Building. Photo by Christopher Bifani.

## Police station's size debated

(continued from page 1)

"more like 12,000 square feet."

Still, that would mean the new building is at least doubling the police department's current space. Is this necessary?

"The 24,000' building is a scaled down plan. Originally it was supposed to be 32,000," Richlan said. "24,000' is the minimum recommended size."

When asked where this recommendation came from, Richlan said a police building consulting firm based in Illinois supplied the information.

Location is debated, too.

In a cost concession, the board of commissioners chose to place the building in the back of Town Hall, rather than alongside of it on Washington Avenue. Mayor Michael Marotti explained that it would have been "too tight" to place next to Town Hall, because it was agreed no commercial property was to be acquired.

Opponents of placing the building in the back claim that building it does a disservice to the

town, that it is redevelopment that nobody will see. One of the key elements in the plans for any new municipal construction is the short-term gains it will hopefully give to downtown redevelopment efforts.

In fact, for months both Commissioner of Public Safety Ralph DiRuggiero and Mayor Marotti stressed the redevelopment

municipal construction would bring seemingly more than anything else.

However, Marotti stated last week that getting the public safety facility for the police department was "the most important thing" indicating publicly that the board is focusing more on the need for the building, rather than on any future renewal it may or may not spark.

## Complex fiasco cost \$400,000

(continued from page 1)

New Jersey statute that determined the outcome of that Bergen case he cited from, and said this would also apply for Belleville.

The Concerned Citizens believe that if these charges are proven in a court of law, it will show that both Zinna and the board acted "incompetently" in their handling of the entire \$10 million complex matter, which has resulted in a large tax increase for Belleville homeowners.

Complex fiasco hiked taxes?

The Concerned Citizens of Belleville claim that a significant portion of this year's tax increase is a direct result of the ill-fated complex.

According to figures they say come directly from township records, around \$400,000 has already been paid to the firms of

architect Frank Richlan and engineer Neil Siciliano.

Frantantoni said the figure is shocking, considering that no construction ever took place, only paperwork. He added that the money paid for that "paperwork" amounts to "10-11 cents" on every homeowners tax bill or about forty dollars each.

Although Zinna has yet to formally reply to Concerned Citizens' charges, the group has made good on their pledge to refer those charges to state law officials.

Calling the board's legal conduct of the entire municipal construction matter an "arrogant disregard for the rights of Belleville's citizens," the CCB last month turned over all of its evidence and allegations to Leroy F. Umboltz, chief of the Information and Records

Management Section of the Department of Law and Public Safety, State of New Jersey.

Frantantoni said Umboltz then turned over the CCB's information to the proper divisions where an investigation is taking place.

Regarding the current plan for a public safety building on the corner of Valley Street and Belleville Avenue, Frantantoni is glad the board of commissioners chose the site over the proposed Washington Avenue site because he agrees that it will cost less to build it there.

However, he said he is skeptical of the current \$4.4 million price tag saying the building should be able to be constructed for much less.

He said if the board really wanted to save money, they would have instructed the architects to design the most cost-effective building—a simple, yet tasteful four-cornered rectangular design.

Frantantoni, who is in the construction business, said the 8 cornered, U-shaped design Beckard-Richlan Associates proposed, and the board of commissioners approved, is a costly design when compared to a simple rectangular design.

The CCB leader added that following a tour of the current Belleville Police headquarters, he continues to believe that the forthcoming public safety building could make do with less space, perhaps 22,000' or 20,000'—a move which could save the town money.

**NUTLEY FOOT CARE CENTER**  
Dr. Robert Lardiere  
Surgeon - Podiatrist  
"Complete Foot Care For The Entire Family"  
230 Centre St.  
Nutley  
667-5070

**GEM Carpets, Inc.**  
237 Centre Street  
Nutley, N.J. 661-0156

**FALL INTO Savings**  
WITH  
**HORIZON CARPETS**  
SEPTEMBER 1 - 20

9 AM - 5 PM  
Monday & Tuesday 9 AM - 5 PM  
Saturday 9 AM - 1:00 PM

**It's Not What We're Up To ...  
It's What We're Down To.**

**24 HOUR AUTO LOANS**

**9.9%**  
Annual Percentage Rate  
**FINANCING**

Harrison Street  
NUTLEY  
Jeanne Paulson  
661-5110

Kingsland Street  
NUTLEY  
Diane Gruber  
661-5121

**SECURITY NATIONAL BANK & TRUST COMPANY**  
of NEW JERSEY

MEMBER FDIC  
EQUAL OPPORTUNITY LENDER

**Ladies - Ladies - Ladies**  
**This One's For You**

**ALL MALE REVIEW**

Check Out Those Gorgeous Hunks!  
**ONE NIGHT ONLY**  
Date - Sunday, September 21, - 6 P.M.  
Cost - \$10 per person  
Place - White Eagle Manor  
41 Broughton Ave. Bloomfield  
**MAKE RESERVATIONS NOW!**  
**748-6590**

**GINO'S IS BACK  
NOW BETTER THAN EVER!**

**GRAND RE-OPENING**

Monday Special  
11:30am to 1:30pm  
1/2 PRICE  
For Dinners & Pasta

Tuesday Special  
Extra Large Pizza  
\$3.95  
Buy One Dinner  
at Regular Price  
Get Second Dinner  
At 1/2 Price

Soft Ice Cream  
Now At Gino's

Grand Opening  
Special  
FREE  
with any order  
from our charcoal  
grill or one of  
our special  
stuffed pizza's  
GINO'S TEE SHIRT

**PIZZA AT ITS BEST**  
**GINO'S PIZZERIA**  
Owned and Operated by the Fern Bros.  
545 Washington Ave.  
Belleville, New Jersey 07109  
(201) 751-5848

**WE DELIVER**  
**751-5848**

Open 7 Days  
11 A.M. - 11 P.M.  
Fri. & Sat. till Midnight

# Belleville Times

Serving Belleville Since 1909

(USPS 049-220)

Published Every Thursday  
At 155A Washington Ave.  
Belleville, N.J. 07099

Annual Subscription\* \$14.00  
Senior Citizens \$7.00

Second-Class Postage Paid  
At Newark, N.J.  
Postmaster: Send address  
changes to The Belleville Times,  
155A Washington Ave., Belleville, N.J. 07099

Publisher: Frank A. Orechio

Editor: Christopher Bilani

To report news and other items  
of interest, call:

759-3200

## THOUGHT FOR TODAY

### Don't Quit

When things go wrong as they sometimes will,  
When the road you're treading seems all up hill,  
When the funds are low and the debts are high,  
And you want to smile, but you have to sigh,  
When care is pressing you down a bit,  
Rest, if you must, but don't you quit.

Life is queer with its twists and turns,  
As everyone of us sometimes learns,  
And many a failure turns about,  
When we might have won had we stuck it out,  
Don't give up, though the pace seems slow —  
You may succeed with another blow.

Success is failure turned inside out —  
The silver tint of the clouds of doubt,  
And you never can tell how close you are,  
It may be near when it seems so far,  
So stick to the fight when you're hardest hit,  
It's when things seem worst that you must not quit.

## Tax business

The business of keeping Belleville in business cost more this year, and the township taxpayers paid the price.

\$150 and more per home was tacked on to the bill, thanks to steep hikes in municipal, county and school assessments.

But complaining about it now is after the fact. Instead, now that everyone has a somewhat bigger 'stake' in the business of Belleville, it's time we all watched a bit more carefully where the money is going.

With such a big hike this year, and with inflation still running low, there should be no more tax increases for some time.

But the only way to make sure is if taxpayers oversee the 'business.' Keep going to the meetings, keep asking the questions. And if officials don't like it, they're in the wrong line of work.

One question we're asking: Will next year's commissioners be able to build a police station without raising taxes? Where will the money come from to pay off the bonds, however large (\$3 million, \$4 million, \$5 million...) it may ultimately be?

Unless next year's commissioners can figure out a way to build the headquarters without forcing taxpayers to suffer another hike, opposition to it is going to grow.

The sad truth is that municipal construction, on a scale a majority of townspeople support,

should have begun a long time ago, when building costs were less. Just as sad is the fact that the taxes already spent on the ill-fated \$10 million complex alone could have paid for almost one year of financing the current project.

But again, complaining about it is after the fact.

Municipal election time is about 8 months away, some 16 board meetings. Will the taxpayers, shareholders in the business of Belleville, carefully monitor their elected officials to make sure this budget is spent wisely? Will the 'shareholders' grill any and all (commission) candidates to find out if they've got ways to build our urgently needed police station without another tax hike?

As both taxpayers and voters in this business of Belleville let's make it known that we want government that will safeguard our streets and our financial security.

Let's make it known to both commissioners who may want to be re-elected, and to township group leaders who may also want board seats, that our votes depend on their plans.

We've paid enough, in the pocket and on the streets. This year's tax business was monkey business.

A little poorer and a lot wiser, the 'shareholders' know what they want. They're not likely to be fooled again.

## A season of spirit

Despite the continuing political controversy, the next few months promise to be joyful ones in Belleville as the hometown spirit surrounding our school athletic teams gradually melts into the spirit of Christmas season, less than three months away.

It's a good time for opponents on both sides of the township's political storm to take "time out" to celebrate the community spirit of Belleville — a spirit exemplified in the townwide support given to our talented school athletic teams.

We encourage our readership to support our teams and to follow their fortunes in the pages of our expanded sports section.

With photos, standings, in-depth reporting and commentary, the Times will strive to have the most comprehensive Belleville sports coverage.

It is indeed a season of spirit. The Times wishes the best of luck to all Belleville athletic teams.

Labor Day came early this year, the first Monday in September was the first day of the month, next year it will be the seventh, extending vacation time an extra week, something for school students to look forward to.

There was more than a bit of nostalgic reminiscence, especially for union members, this Labor Day. For the first time in 25 years there was no Fifth Avenue annual Labor Day parade. Labor had been parading in New York since 1882, and the 1985 parade may have been its last, primarily because so few turned out to watch them.

We, belonging to the ranks of Labor (Amalgamated Transit Union, AFL-CIO) put out the American flag early Labor Day morning and to our annoying



dismay, as the day grew on, it became apparent that within the immediate neighborhood area there was but one other flag on display, one which incidentally is consistently displayed every day, except in inclement weather.

Five years ago the newly fired air controller marched in defiance of Ronald Reagan and in October 1984, workers by the tens of thousands massed on Seventh Avenue to salute Walter Mondale in a drama that bid farewell to 50 years of solidarity with the Democratic Party.

The unions are down to only 18 percent of the workforce now but they are by no means out. They will rise again with the hard times that are just around the corner.

In 1935 Senator Robert Wagner (N.Y. D.) introduced the legislation that created the National Labor Relations Board, defining unfair labor practices and providing for government supervised elections of union representatives. President Franklin D. Roosevelt signed the Wagner Act into law in July of that year.

Strikes of essential workers, corruption, mob influence, no-shows and feather bedding didn't help to promote popular respect, but it doesn't hurt to recall the sweat shops where workers labored in miserable conditions for little pay, and that if they tried to do any, or beaten or worse, and that Georgia had a special conviction camp for those who walked picket lines.

No matter how you feel about unions, if you're working, you're making more and your benefits and working conditions are better than they would be if labor hadn't prospered over the past 50 years.

Unions not only won victories for their own members, they created a class of enlightened employees who learned that the best tactic for keeping a union out was by matching or bettering pay and benefits labor won at the bargaining tables or on the picket line. We know, we had gone through it many times, the trend is ever upward, the courage of union workers has given us the good times.

Jean Kirkpatrick writes in the column captioned 'America owes much to labor organizations.' The high standard of living Americans enjoy is a tribute to generations of hard work and innovation, to the effectiveness of American entrepreneurs, American workers — and American unions.

She further states, "The United States is blessed with a free labor movement whose leaders and rank and file are deeply and actively committed to democracy and a free society. The labor movement is no more perfect than any other American institution, but competition, a free press and an active membership can keep unions free from corruption and racketeering most of the time, much as freedom, competition and alert consumers keep business generally honest and effective."

Mentioning men like Lane Kirkland, Albert Shanker, Tom Donohue, Joseph P. Kamp and those who represent make an important contribution every day to the strength of our economy and our society, Ms. Kirkpatrick said, "They deserve our gratitude."

## Defends vo-tech schools...

To the editor:

The Belleville High School Vocational Advisory Council is a group composed of lay members and teaching staff who serve the community by assisting in determining the needs of students to successfully train in the pursuit of vocational careers.

Recent studies, available from a multitude of sources, have indicated a substantial need for vocational careers in the immediate future. Some have even predicted severe shortages by 1990.

Our Council has attempted to follow programs and attitudes at government levels which may assist or inhibit vocational education. Recent actions and attitudes at both the Federal and State levels have resulted in proposed or actual funding cutbacks, which are severely hampering the advancement or continuance of required exposure and training at the high school level.

A case in point is the recently passed Gramm Rudman act, currently being disputed in the courts. While the intent of the legislation was to assist in balancing the Federal budget by reducing funding to frivolous programs, the language has resulted in powers being delegated to groups who tend to react without consideration for possible future results. The court challenge is seriously one of constitutionalism.

One of the first programs attacked was educational funding in vocational areas. This points out a lack of foresight and understanding on those groups entrusted with the power to arbitrarily apply funding reductions. We applaud the court challenge and request our representatives to reexamine the intent of the act with respect to its attempted enactment.

If necessary, we ask that additional legislation be provided to clearly define areas and procedures necessary before funding reductions. We are sure that, with proper knowledge and understanding of the goals and needs of vocational training, these programs will remain priorities.

Another area of concern is the alleged attitude of Secretary of Education Bennett concerning vocational training. It has been publicized that the Secretary is against vocational training at the high school level and feels it should be taught

at a college grade. The Council vehemently disagrees with this concept. In fact, exposure and preliminary training should occur at as early an age as possible. This is necessary to provide students with some knowledge of the alternative career paths and choices that are available.

At the high school level, intense hands-on experiences can be gained, which can guide students in making a choice for further training. When properly taught, vocational education is not a substitute for math or English. It is an extension of those principles molded into real life situations. An examination of vocational courses easily notes applied principles of physics, engineering, report writing, logical deduction, speaking, and many other sciences.

The Council requests that Secretary Bennett evaluate his positions in this area. The Council totally endorses further training beyond the high school level to increase proficiency in all chosen career paths.

At the State level, it has been publicized that New Jersey is committed to "high tech" and "higher education." The Council endorses these goals. However, one must remember that many support services are needed to fulfill them — in industrial arts for communication needs, mechanical construction and maintenance personnel, accounting and clerical duties. The list could go on indefinitely. We request that State officials continue to consider these needs as necessary career paths, especially in the funding areas.

In conclusion, we would like to point out that any reduction in training aids by our teaching institutions ultimately affects the consumer. If industry and commercial establishments are burdened with the need to provide basic skills, the cost of salable products will undoubtedly suffer as companies attempt to maintain profit margins. The Council requests that elected officials realize the need for vocational training and endorse it wherever possible.

Sincerely,  
William P. Cook, P.E.  
Secretary  
Belleville High School  
Vocational Advisory Council

## Tatz is a nightmare...

To the editor:

I have been a resident at 132-134 Greylock Avenue, Belleville for 43 years. This property has been in my family for over 50 years with lots on Railroad Place.

The past few years have been a nightmare. There has been an increase of trailer trucks going into Tatz Industries on Railroad Place. These trailer trucks are coming down Greylock Avenue which is located off of Washington Avenue. The street has a full grade of 1-10 degrees.

Considerable damage has been done by these trailer trucks on Greylock Avenue as listed below.

1. Street sign has been hit and knocked down as of yet has not been replaced.

2. Curb on Greylock Avenue and Railroad Place has been destroyed and not repaired.

3. Trailer trucks have been on my sidewalk and up against my house because they cannot make a turn.

4. These trucks have come so close to my property that it has ripped my fence down.

5. Telephone poles have been hit by the trailer trucks.

6. Heads of storm sewers have been broken by these trucks.

7. Damage to the streets Greylock and Railroad Place such as potholes, pavement deterioration, tire marks imbedded in the pavement because Greylock Avenue and Railroad Place pavement was not constructed for these heavy vehicles.

8. Trailer trucks making deliveries to Tatz Industries have parked on Railroad Place overnight, with motors running causing a disturbance to the residents in the area.

9. These trailers have to make illegal maneuvers to drive in and out of Railroad Place, such as backing around the intersection of Greylock Avenue and Railroad Place which is in violation of Motor Vehicles 39 Book.

I have verbally notified the proper Departments in the Town of Belleville, Police, Public Works and Building Departments, etc. to no avail. I have also called the mayor's office numerous times but could not contact him due to his busy schedule. Someday someone will be killed or my home will be destroyed by these trucks. Do I hold the Town of Belleville responsible for their negligence of not correcting this situation?

In 1984, I hired an attorney to fight the variance request proposed by Tatz Industries on Railroad Place. In November, 1985, the Planning Board denied Tatz Industries the variance. Also, I am sure you can obtain a copy of the minutes from the Planning Board meeting concerning this matter.

What was denied to Tatz Industries in 1985 by the Planning Board appears to now be happening through a back door.

Tatz Industries purchased lots on Greylock Avenue across from my home. Before I go on, I would like to inform you that these lots belonged to Hartman Industries and were considered buffer zones.

In July 1986, Tatz Industries cleared these lots making no regard to trees and greenery. Heavy construction machinery equipment was brought in and dirt removed on Railroad Place where Tatz Industries proposed their loading dock. Visual estimated dirt removed was 1,000 cubic yards which was loaded on Greylock Avenue lots. This soil raised grades as much as 2' x 6". This has resulted in water and soil run-off on Greylock Avenue and Railroad property and storm sewers. Our Building Department informed the Conservation Department that Tatz Industries was just clearing their lots and pushing around a little dirt. I was told by the Building Department that no permits were issued nor required for these activities that are going on. (In other words from the Town) "Nothing is going on."

In removing the dirt from Railroad Place, hazardous conditions were left against adjoining properties. These grades were cut against the standards set by OSHA. OSHA, located in Dover, which covers this area was called and Tatz was told by OSHA to correct this situation.

Public Service located and erected a utility pole on the right of way of the sidewalk on Railroad Place. The Building Department was called again and we were informed PSE&S would remove the pole. This pole still remains as of this date. Who applied for this?

The week of August 11, 1984, my brother witnessed Tatz Industries employees painting curbs yellow on Greylock Avenue estimated to 25 feet long on both sides of the street. I personally want a response from Mayor Marotti as to who authorized these curbs and why? This now causes a hardship to businesses along Washington Avenue and residents on Greylock Avenue for parking. Can anyone in Belleville paint these curbs yellow if they so desire?

Now the week of August 8, 1986, fence posts have been erected along Tatz Industries lots on Greylock Avenue. It appears that these posts are not set back far enough to allow the Township right away. There is an opening in this fence of this non-existing parking lot, which the town knows nothing about, wide enough to fit the Titane through. Which is also taking parking away from the Town of Belleville, businesses and residents for the benefit of one.

I have not been notified of any actions in my area which is happening and I am a taxpayer. Yet I see curbs painted



## Bring back alumni game...

To the editor:

The cool breezes of autumn will soon be upon us and so will it comes the football season. It's always an exciting time. The anticipation, the preparation and the togetherness of the town.

However this time was a little different, it brought back to mind a memory of my childhood. I can remember being a little girl and one one particular Saturday night of the season, everyone from two neighboring towns got the adrenalin flowing for a special night. One of dreams, memories and pride.

No, it wasn't the regular season match of these two omnipotent teams, but the yearly match of the revered Alumni. The renowned Belleville Nutley Alumni Game.

I was too young to appreciate it then but as the sounds of September approach, I can remember my parents and relatives looking to this game with much pride and passion.

At the time, I wasn't allowed to attend because of the late hour of the game, but I can distinctly recollect hearing the roars from the distance and looking up to the sky to see the faraway glow of the stadium lights. I can still feel that warmth of belonging when I think of that night. And as I continued through school and began to understand the togetherness and pride this sport always seemed to bring forth.

Looking back, so many excellent players have come out of both these schools in the last 20 years and I think the present youth as well as the ever present adults would enjoy this match once again.

Besides, now as an adult I would love to enjoy this game from the 50 yard line and bring my daughter, so she may grow with fond memories of her town.

What do you say "Alumni"? Belleville and Nutley again in '86 and '87, '88, etc? Tradition is too often forgotten and I think we could use some again.

Sincerely and hopefully  
Linda Vriello Pizzi  
BHS Class of 1976

## Filthy jail cells...

To the editor:

Belleville has one of the worst jail cells I have ever seen. There are three filthy, very disgusting cells in the basement police station. The stench of urine is overpowering. The only "beds" are hardwood

benches. The cells are damp and musty as well as dirty. There are no facilities for washing.

A man is presumed innocent until proven guilty, right? An "innocent" man should not be put in a pesty. A dog is kept in a cleaner kennel.

As a concerned citizen, I truly believe the town of Belleville should fix up its jail cells. At the very least, they should be fit for human habitation.

Yours truly,  
Mona Santiago  
Belleville

## Letters to the Editor

**EXPIRES**  
9/30/86  
**BTNS**

**Crispy, brick-oven fresh bread.**

**Savory Sesame seeds.**

**BRING THIS COUPON**

1.3" full inches from end to end.

Weights almost two pounds.

**\$2.99**

REGULARLY \$4.25

**BRING THIS COUPON**

**IN THE GROCERY STORE**

**ROWE-MANSE**

**Take two or three friends to lunch!**

**Save \$1.26 on our Super Hero.**

*Rowe-Manse Emporium*

Visit Our Grocery Store for sandwiches, made to order and the finest breads, baked goods, cheeses and provisions.

Located 1/2 mile east of the Garden St. Pkwy., adjacent to Rt. 3, Supermarket Super Center, 201-472-8170, RT. 3 & BLOOMFIELD AVE., CLIFTON, NJ 07012

**BRING THIS COUPON**

lots cleared, statues, poles going up and fences being put up but the town and "Nothing is going on."

Does a homeowner have to go into debt for legal representation to protect their land when I believe the town and state have ordinances to protect the town and taxpayers like myself against all these violations I have brought to your attention?

But if need be, to protect what is rightfully mine and my family's, I will pursue these matters with attorneys to the fullest and let the chips fall where they may. Will await the mayor's response and findings.

Carmela Hayes Anadolara

## The United Way.



Thanks to you it works for all of us.

### PERSONAL FITNESS NAUTILUS CENTERS

ARE YOU READY FOR AUTUMN?



Come in before September 15 and beat our Price Increase

#### PERSONAL FITNESS CENTER

has a fully trained staff to offer you personal professional instruction

"Personal Fitness Centers Where Fitness Gets Personal"

Personal Fitness Nautilus Center  
495 Franklin Avenue, Nutley • 661-0778  
163 Washington Avenue, Belleville • 759-6402

# Nutley

# 5 Mile Classic

## SUNDAY, SEPTEMBER 21

**Sponsored by:**  
**Nutley Savings**

Co-sponsored by the Nutley Irish American Association, the Nutley Department of Parks & Recreation, Essex County Department of Parks, Recreation & Cultural Affairs.

**DISTANCE AND TIME:**  
Five Mile: 10 a.m.  
One Mile Fun Run: 9:30 a.m.

**WHERE:**  
Registration at the NUTLEY SAVINGS & LOAN ASSOC., 371 Franklin Avenue, Nutley, N.J. Post entry Registration and Race Number Pickup Tables open at 8 a.m.

**COURSE:**  
Well marked course. Along the railroad tracks & streams. Traffic Controlled. Spills at every mile. Water Stations. Electronic Timing System by Race Timing Systems & Computer Score Race Scoring System.

**RACE DIRECTORS:** Joseph Cunningham 255-0224 Patrick Keating 256-5206

**AWARDS**

**FIVE MILE RUN**  
TROPHIES to first overall male and female (five mile run)  
TROPHIES to first in each age group (men and women) 14-18, 19-24, 25-29, 30-34, 35-39, 40-49, 50 and over

MEDALS awarded to 1st through 5th place in each age group (men and women)  
MEDALS awarded to all finishers OVER 60 YEARS of age

**ONE MILE FUN RUN**  
MEDALS awarded to the first five boys and girls in each grade (grades 3 to 5)

EACH ENTRANT is eligible for PRIZES to be RAFFLED at END of 5 mile run

**ENTRY FORM**

In consideration of this entry being accepted, I hereby certify that I am under 18 years of age and that this application has been signed by my parent or legal guardian, that I have trained sufficiently for this event and that I am in physical condition for this event.

Name: \_\_\_\_\_ (last) \_\_\_\_\_ (first)

Address: \_\_\_\_\_

Age: \_\_\_\_\_ Sex: \_\_\_\_\_

Race entered: \_\_\_\_\_

Signature: \_\_\_\_\_

Did you run in last year's race? Yes ☐ No ☐

Parent's signature (if under age 18): \_\_\_\_\_

5 mile ☐ 1 mile ☐ BOTH ☐

FREE T-SHIRTS to all PRE ENTRIES (To post entries while supplies last)

T-Shirt size: \_\_\_\_\_

SM ☐ LGE ☐ MED ☐ XLGE ☐

# Crimebreaker!

KIDSTUFF

## Caring for yourself

Do you ever have to take care of yourself after school or while your parents are running an errand? Do you have to watch a brother or sister too?

- Make sure you know how to reach your parents where they work and what to do in case of a fire or other emergencies. Learn all the local emergency phone numbers — fire, police, hot lines, poison control center — and make sure they're posted near all the phones in your home.
- Be sure you know how to use the telephone correctly — both pushbutton and dial — and how to make local, long distance and emergency calls, and how to get the operator.
- Check in with your mom and dad or a trusted neighbor as soon as you get home.
- Make sure you know how to work the door and window locks

and lock the door after you come in.

- When you're home alone, never open the door for anyone you don't know well or are unsure of. Check the identity of service people by calling their office before letting them in. And don't let unfamiliar callers know that you're alone.
- If you feel you're being followed on your way home from school, don't go home — go to a store, or back to school.
- With your mom and dad, select a place to keep a key or keys and money for lunch or emergency phone calls.
- Never go anywhere with another adult, even one who says he or she has been sent by your parents. You and your parents might want to adopt a secret "code word" as a signal if another adult has to pick you up.
- If anything happens to you while you're alone that makes you feel uncomfortable, tell an adult you trust. Always. Every time.

Courtesy of Belleville Police Department

### REFLECTIONS SALON

"A Full Service Salon"

Tuesday thru Friday SPECIALS

<b>PERMS</b> <b>\$50</b> Includes Cut and Styling	<b>FOIL FROSTING</b> <b>\$60</b> Includes Styling and Conditioning
---	--

11 High St. • Nutley • 667-6800



### GREENVIEW WAY


This sparkling, air-conditioned center-hall Colonial features a large living room with fireplace, dining room, modern eat-in kitchen, powder room plus a family room that extends across the back of the house opening onto a secluded deck and yard. An oversized master bedroom and bath plus three bedrooms and an additional bath are on the second floor. Within walking distance to train or bus — a commuters dream house. \$425,000



## SCHULTZ REAL ESTATE

628 Valley Road  
Upper Montclair - 746-5811


Multiple Listing Service, Member of the National Board of REALTORS, Board of REALTORS, of Bloomfield, Glen Ridge, Nutley and Belleville, and West Essex Board of REALTORS



## REALTY WORLD

### THE RESULTS PEOPLE.

#### BAUMGARDNER AGENCY



### INGROUND POOL DOUBLE LOT NEW LISTING THREE BEDROOM COLONIAL

Features include a Modern Kitchen, Family Room with Wood Burning Stove, 2 car Garage. Listed at \$179,900 by Out-of-State owner. MUST CLOSE by end of year. Submit all offers, for consideration.

Covering  
Bloomfield - Glen Ridge - Nutley - Belleville  
378 Broad Street, Bloomfield, N.J. 743-8382



PIZZA TIME! — (l-r) Pat & Gino Perri, owners of Gino's Pizzeria, County Executive Peter Shapiro and Belleville Commissioner Ralph DiRuggiero at site of new pizzeria

Two Belleville businesses which were severely damaged by fire last March have received financial assistance to rebuild through Belleville's Community Economic Revitalization Program (CERP). Gino's Pizzeria at 545 Washington Avenue and J.P.'s Cleaners at 543 Washington Avenue are the recipients of low interest (2 1/8%) loans toward the purchase of machinery and equipment necessary to reopen their businesses.

County Executive Peter Shapiro visited the construction sites of the two businesses with Belleville Commissioner Ralph DiRuggiero. After discussing plans for their new facilities with the owners, Shapiro said that the livelihoods of these businesses were seriously threatened after the March fire. With the assistance of the CERP, they were able to put their businesses back together without too serious an interruption.

Each business will receive a loan of \$9,000 at the lower interest rate. The remainder of the financing, which in both cases ranges between \$65,000 - \$70,000 is obtained through conventional sources at the going market rate.

The CERP, which is funded through Belleville's Community Development Block Grant Program, provides small grants as well as low interest loans for Belleville businesses which need financing to renovate commercial properties and to purchase machinery and equipment related to their business operation.

Pat Perri, owner of Gino's Pizzeria, is expected to reopen on September 8th. Perri was informed of the CERP by the local Chamber of Commerce and described the program as very significant to him at this time when expenses are very high. "I have had to invest a great deal to reopen my business and the CERP is helping me to buy much of my cooking equipment at a very low rate," said Perri. Gino's was in business for nine years in Belleville prior to the fire and will be open seven days a week to serve pizza, sandwiches and seafood when it

again opens its doors September 8.

J.P.'s Cleaners also took advantage of the CERP to purchase air compressor pumps, tables and other dry cleaning equipment. Giacomo Nasini, owner of J.P.'s Cleaners, commented on his loan by saying, "I have been in business here for ten years and was anxious to reopen my shop as soon as possible. What the loan program means to me is that Belleville cares about its businesses and tries to

help us when we need help."

The Economic Development Corporation (EDC) of Essex County administers the CERP for Belleville. In addition, the corporation provides financial packages at below market interest rates for projects ranging from \$10,000 to \$10 million. Anyone wishing further information regarding the CERP or other programs may call EDC Director Everett Shaw at 731-2772.



Laundry time — (l-r) Belleville commissioner Ralph DiRuggiero, Giacomo Nasini, owner of J.P.'s Cleaners, County Executive Peter Shapiro and Belleville Town Clerk MaryLou Hood looking over plans for new cleaning establishment

## Grey-Rose social club holding fifth reunion

The Grey-Rose social club, whose members consist of those who resided on Greylock and Roosevelt Avenues, Belleville, will hold their seventh dinner-dance at 7:30 p.m., Saturday, October 11, 1986 at Nutley Elks, 242 Chestnut Street, Nutley. Tickets are \$20 per person.

The affair is primarily held as a reunion for friends and

relatives who do not have the opportunity frequently to see each other. It is open to all those currently residing there since 1950 and to those who have moved but lived there prior to 1950.

Those interested in attending should contact either of the following committee members: Nicholas Duca, Jr. (201) 667-5735, Vincent Parigi (201) 235-9180.

## New titles at library

Recently added to the child care and hygiene section of the Belleville Public Library, 221 Washington Ave., is the book, "Should I Call the Doctor?" by Christine Nelson and Susan Pescar. A comprehensive guide to understanding your child's illnesses and injuries, this book tells the parent how to deal with everything from common childhood illnesses and injuries to life threatening emergencies. It also explains when to call the paramedics or ambulance, rush to the emergency room, call the doctor, or to treat at home. Special boxes emergency quick references, quick references, and check lists enable the parent to quickly judge the seriousness of your child's condition and to make crucial medical decisions swiftly and surely.

The book also has in-depth sections on preventing accidents with sixteen safety checklists, medical procedures and tests, the effects of hospitalization on children, and how to work with and get the most from medical professionals.

Approximately 1.3 million drunk drivers are arrested yearly. On a nightly basis, between 1 in 500 to one to two thousand drivers are arrested for Driving Under the Influence of alcohol. The book "Drinking and Driving: Know Your Limits and Liabilities" by Marshall B. Stearn will teach you how to learn to calculate your blood alcohol at a given time, know when to stop drinking before you intend to drive, know the D.U.I. laws of your state, know your financial responsibility if arrested under D.U.I., know how drinking affects your driving skills and coordination, learn how to safeguard against D.U.I. and learn how to give a safe party.

### DiRuggiero breakfast tickets

Tickets are available for the Breakfast Social honoring Commissioner Ralph DiRuggiero. The breakfast is scheduled for September 28 at ten o'clock at the Chandelier in Belleville.

The proceeds from this breakfast will provide the monies necessary to allow him to continue to sponsor scholarships for high school graduates and to support local projects. Tickets can be obtained by calling Russ Purdue at 759-6659.

### Belleville Old Guard membership drive

The Old Guard of Belleville, Chapter 26 is opening their roster for new members in their annual fall membership drive.

The Old Guard is a group of retired men who meet socially for discussion sessions of civic and legislative matters.

Meetings are held at the First Church Hall on Union Ave., on the second and fourth Tuesdays of every month at 9:30 a.m.

Come to a meeting and get acquainted



### POSSIBLE SIGNS OF PINCHED NERVES

- Headaches/dizziness
- Stiffness
- Neck pain, tight muscles
- Shoulder pain
- Pain down the arms
- Numbness in hands
- Low back pain, hip pain
- Sciatica
- Leg pain/numbness

### EMERGENCIES TREATED ANYTIME

### MOST INSURANCE ACCEPTED

FAMILY FEES AVAILABLE  
MOST INSURANCE ACCEPTED



Call today for an appointment and smile!

## 667-6850

175 Franklin Ave., Nutley, N.J.  
(In the Nutley Professional Building)

Robert J. Armento, D.D.S., M.S. Joseph A. Brasco, D.D.S., M.S.

\*Fee does not include extractions or general anesthesia, required for some dental treatment.

DR. RALPH J. DE MAIO  
D.D.S., M.S.  
DENTIST





# Events in the Area

## Temple plans rummage sale

The Sisterhood of Congregation Ahavath Achim, Belleville, will conduct a fall rummage sale Sunday, Sept. 14 and Monday, Sept. 15, at 125 Academy St.

Hours are 10 a.m. to 3 p.m. All household items assorted furniture, books, records, jewelry and clothing are among the selections. Mrs. Frieda Berkowitz is the sale coordinator.

## Quit smoking program at Maass

Clara Maass Medical Center's Human Resources Dept., in cooperation with the Essex County Unit of the American Cancer Society, will conduct a Fresh Start Quit Smoking Program 8 to 9 p.m. Sept. 23, Oct. 7, 14 in the Belleville Founders Room, ground floor of the main hospital. Topics: "Understanding Why and How," "Managing the First Few Days," "Mastering Obstacles" and "Enjoying It Forever." Cost: \$10 with \$5 refunded for attending all four sessions. For information and pre-registration, call Robert Califano, at 450-2288.

## Free financial planning seminar

Grace Episcopal Church, 200 Highfield Lane, Nutley, is holding a financial planning seminar 7:30 p.m. Sept. 16 and 23 in the Upper Room at the church. Alan Gabelman of E. F. Hutton will speak. No charge or obligation. Call 667-1841 for more details.

## Chrysanthemum sale Sept. 27

The Historical Society of Bloomfield will sponsor its seventh annual chrysanthemum sale 9 a.m. to 3 p.m. Sept. 27 on the esplanade of the Bloomfield Public Library, 90 Broad St. If raining, sale in lobby. Proceeds to society's scholarship fund.

## VFW Post 493 picnic Sept. 21

VFW Post 493 will hold its annual picnic noon to 6 p.m. Sept. 21 at post headquarters, 271 Washington Ave., Nutley. Tickets: \$12 adults. Clams, hot dogs, hamburgers, chicken, sausage and peppers, beer and soda. For more information, call 235-9661.

## Bloomfield Columbiettes Sept. 24

Bloomfield Columbiettes will meet 7:30 p.m. Sept. 24 at Knights of Columbus Council, 190 State St. Refreshments served. For more information, call Rose Ruffalo at 743-8688.

## St. Peter's communion breakfast

St. Peter's Rosary Fraternity will sponsor its annual communion breakfast Oct. 5 at the Forest Hill Field Club, 9 Belleville Ave., Bloomfield, immediately following the 8:30 a.m. Mass at the church. Tickets are \$8. Rosarians and all members of the parish invited. Call Mary Manthey at 751-0813 or Marge Waldran at 759-9019.

## Chinese auction at St. Clare's

St. Clare Leisure Time Club will hold a Chinese auction 2 p.m. Sept. 21 in the Parish Center, 59 Allwood Road, Clifton. \$3 donation includes refreshments. For more information, call 773-2681.

## Kid Kats Cafe Talent Show

The Nutley Parks and Recreation Dept. and the Nutley Junior Woman's Club are sponsoring a "Kid Kats Cafe Talent Show" 7:30 p.m. Nov. 14 at Franklin Middle School. Children 3 to 15 may enter in categories of tap, jazz, ballet, lyrical, contemporary and acro-gymnastics. Students can enter more than one category and will be judged against their own age group. For more information, call Marcia Vasvary at 667-2241 or Marie Vicchiarello at 667-3731.

## CPR recertification at Maass

Clara Maass Medical Center will hold a CPR recertification course for those already certified 1 to 3 p.m. Sept. 18 and 25 in the Remondelli Room in the Continuing Care building at the hospital. Both sessions must be attended. Registration fee, \$15. To register, call 450-2287.

## Eastern Chapter of Columbiettes

The Eastern Chapter of the Columbiettes will meet 8 p.m. Sept. 23 at Bishop Wigger Council, Irvington. State president Maria Melograno of Bloomfield Columbiettes will install new officers. Refreshments served.

## Auditions for youth orchestras

The Youth Orchestras of Essex County will hold auditions for prospective new members 4 to 5:30 and 7:15 to 9:15 p.m. Sept. 15 at West Orange High School, Pleasant Valley Way. For more information, call James Buchanan at 761-4672 or Renee Makan at 994-0296.

## Eastern Chapter of Columbiettes

The Eastern Chapter of the Columbiettes will meet 8 p.m. Sept. 30 at Bishop Wigger Council, Irvington. State president Maria Melograno of Bloomfield Columbiettes will install new officers. Refreshments served.

## Covered Bridge Squares sale

The Covered Bridge Squares will hold an attic and bake sale 10 a.m. to 4 p.m. Sept. 20 at the Nutley Museum, 66 Church St. Raindate: Sept. 27.

## Unico Auxiliary meets Sept. 18

Nutley Unico Auxiliary will meet 8 p.m. Sept. 18 at the Parks Dept., 44 Park Ave. Wives of Unico members are invited. Minnie Di Giovanni, president.

## Telephone Pioneers Sept. 16

Essex County Life Member Club of the Telephone Pioneers of America will meet 1 p.m. Sept. 16 at Bloomfield Civic Center, 84 Broad St. Retired workers of AT&T (Western Electric) invited. Upcoming events: trip to Atlantic City Sept. 22, five day trip to Cape Cod Oct. 6, bus ride to Hunterdon Hills Playhouse for luncheon show Nov. 20. For more information, call Harry Flaherty at 743-0572.

## Legion flea market Sept. 21

American Legion Post 106 will hold a flea market Sept. 21 at the post home, 621 Franklin Ave., Belleville, near Pathmark and McDonald's. For spaces at \$15, call Barbara at 991-3671 or 759-9650.

## Rummage sale set Sept. 19

The Ladies Aid Society of Belleville Reformed Church will sponsor a rummage sale 9:30 a.m. to 5 p.m. Sept. 19 at the church, Main and Rutgers streets.

## Anorexia, bulimia self-help group

A free self help group for persons suffering from anorexia nervosa or bulimia is starting Sept. 18 in Livingston and will run for eight weeks. For more information, call the Eating Disorders Hotline, 1-800-624-2268. Free information, counseling and referrals.

## School planning family picnic

Washington School, Nutley, is planning a family style picnic Sept. 20 in honor of its 75th anniversary. Former students are asked to contact Annmarie Nicolette at 667-6824, Marilyn A. Weiss at 661-4971 or Kathy Rutaceo at 235-9492.

## Devils vs. firemen Sept. 11

The N.J. Devils vs. the firemen of Bloomfield, Glen Ridge and Montclair 8:30 p.m. Sept. 11 at Pulaski Park, Bloomfield. The fourth annual softball game will benefit the Mountaineer Hospital Alcoholism Rehabilitation program. Tickets: \$3 at the gate. Children 8 and under free. For information, call 429-6130. Raindate: Sept. 12.

## VFW Chinese auction Oct. 19

The ladies auxiliary to Stuart E. Edgar Post 463, Veterans of Foreign Wars, will hold a Chinese auction Oct. 19 at the post home, 271 Franklin Ave., Nutley. Proceeds to the group's cancer fund.

## Roche flea market Sept. 27

Hoffmann-LaRoche Employees Association will run its annual flea market 9 a.m. to 4 p.m. Sept. 27 in the parking lot at Cathedral Avenue and Kingsland Street, Nutley. Rain date: Oct. 4. For more information, call 667-7046 after 6 p.m. Free parking.

## Old Guard of Belleville meets

The Old Guard of Belleville meets the 2nd and 4th Tuesdays of each month at Fawcett Church hall, Union Ave., Belleville.

## Knights, Columbiettes set trip

Bloomfield Knights of Columbus and Columbiettes are sponsoring a one day trip to the Amish country in Pennsylvania. Donation of \$33 includes bus, breakfast, three hour guided tour and supper at Good and Plenty. For reservations and more information, call Rose Ruffalo at 743-8688.

## Giant flea market at Ner Tamid

Temple Ner Tamid of Bloomfield will sponsor its 3rd giant flea market 10 a.m. to 5 p.m. Sept. 14 at the ADP parking lot on Main Avenue, just south of Rt. 3, Clifton. Rain date: Sept. 21. Over 100 dealers. Free admission. For dealer reservations or further information, call 667-4829, 338-6512 or the temple office from 9 a.m. to 2 p.m. at 338-6482.

## Roche Retirees meet Sept. 13

Roche Retiree Club will meet 1:30 p.m. Sept. 13 in building 76 auditorium in the Roche complex. A singing duo, The Skylines, will present a variety of music including Broadway show tunes.

## VFW Post picnic Sept. 14

Belleville Younginger-Alden Jr. Post 275, 17 Belleville Ave., is planning a picnic 1 p.m. Sept. 14 for adults \$5 for children under 11. Clam, chicken, clams on the half shell, baked chicken, hamburgers, hot dogs, corn on the cob, salad, watermelon, coffee, cake, draft beer and soda.

## Modern dance classes at church

Grace Episcopal Church, Highfield Lane, Nutley, is sponsoring a series of modern dance, ballet and creative dance classes for children beginning Sept. 15. Call the church office to register. Judith Burwell, former director of the National Ballet of Honduras, is the instructor.

## Fish and chips served Sept. 12

Comboni Missionary Fathers (Verona Fathers) will serve fish and chips 5 to 7 p.m. Sept. 12 at St. Aloysius Hall, Bloomfield Ave., Caldwell. Donation: \$5.50 per person. Benefit of drought victims in the Sudan. For ticket information, call 744-8080 or 744-7748.

## Dessert, card party Oct. 16

The Lions Auxiliary of the Nutley Lions Club will hold its annual dessert and card party Oct. 16 at the Nutley Elks Club, Chestnut St. Proceeds will benefit the eyeglass program. For tickets or information, call Gloria at 667-7089.

## Woman's Club card party Sept. 22

The Woman's Club of Nutley will hold a card party 1 p.m. Sept. 22 at the clubhouse, 216 Chestnut St. Tickets: \$3. Proceeds to scholarship fund.

## Pancake breakfast Sept. 21

The William Foley Football League will serve a pancake breakfast 9 a.m. to 11 p.m. Sept. 21 at the Bloomfield Civic Center, 84 Broad St. Adults: \$5, children under 12: \$2.50. For tickets, call 743-1571 or 429-8787.

## MIDS meets Sept. 17 in Nutley

The Essex County Chapter of MIDS will meet 8 p.m. Sept. 17 at 15 Clover St., Nutley. A self help support group which offers friendship and understanding to parents who have suffered a loss due to miscarriage, infant death or stillbirth. For more information, call Lisa Calabria at 235-1364 or Bonnie Smith at 239-8467.

## Organizations for area singles

New Jersey Moonrakers, a club catering exclusively to tall and single adults, meets 8:30 p.m. every second Tuesday of the month at the Meadowlands Hilton, 2 Harmon Plaza, Secaucus. All ages \$3 for guests, free for members. 298-0964. Statue of Liberty Celebration Dance 8 p.m. Sept. 26 at the Treadway Saddle Brook. No minimum height required for this dance. \$7 per person. Cash bar, music by DJ. Come dressed as one of your ancestors.

The Singles Connection, widowed, divorced, separated, first and third Thursdays, 8 to 11 p.m., Grace Episcopal Church, 200 Highfield Lane, Nutley. Rag groups, music, dancing. \$3, 235-1177.

New Jersey Moonrakers, tall and single adults, 8 to 10 p.m. second Tuesday, Meadowlands Hilton, 2 Harmon Plaza, Secaucus. Height requirements \$3 per guest, members free. 298-0964.

Jewish Singles Friday night dance, 20's and 30's 797-6877.

A New Beginning pub mixer at Allan's Place, 522 Franklin Ave., Nutley, second and fourth Wednesdays after 9 p.m. Lite music, drinks, conversation. 661-3357 or 667-9806.

Singles dance, 7:30 p.m. to 12:30 a.m. Wednesdays, Springfield Manor, 2880 Springfield Ave., Union Social, ballroom dancing. Orchestra, DJ, big band sound.

Success Oriented Singles (SOS) meets 8:15 p.m. the first and third Fridays of the month. For more information, call 751-1419 or 226-5999.

Sacred Heart Singles meet 8 p.m. Sept. 12 at Nardiello Hall, 12 State St., Bloomfield. Singles invited to help formulate future plans. Discussion on timely topics and refreshments.

## Don't get a job, get a career.

We're part of the nation's largest real estate sales organization and we're hiring people now. People who know a great opportunity when they see it. People who want a career that offers independence and high earnings. And we'll prepare you for it through the exclusive CENTURY 21 CareerTrak training program. If all this sounds like what you're looking for, give us a call today.

Put Number 1 to work for you.

**Century 21**

HOMES R US, INC.  
549 Washington Avenue  
Belleville, N.J.  
751-8800  
Independently Owned & Operated

## NOTICE!

### "WE CHANGED THE RULES"

**Buy Your Replacement Windows**  
Direct From The Wholesaler!  
(Installation included)

**Specializing In Homes, Garden Apartments, Apartment Bldgs. And Commercial Bldgs.**

Quality Windows At The Lowest Prices Possible	
Our Price	Retailer
<b>\$199.00</b>	<b>\$300-\$500</b>
<small>Per window, includes installation. For window, includes installation.</small>	

WE HAVE CUT OUT THE MIDDLE MAN — CALL US NOW FOR A FREE ESTIMATE

No gimmicks Just Homes Prices

## 239-7579

**TWIN CITY WINDOWS**  
INSTALLATION COMPANY  
40 Pompton Ave. • Cedar Grove

FULLY INSURED • MANUFACTURER'S REPRESENTATIVE  
OWNED & OPERATED BY FACTORY TRAINED TECHNICIANS  
WE ARE NO. 1 QUALITY INSTALLATIONS • WE CARRY A FULL PRODUCT LINE!

**FIRST TIME OFFERED**

No Dealers Please

### BELLEVILLE — JUST LISTED

### ALL BRICK RANCH

34 years old — features sunken LR w/fireplace, 2 lg. BR, DR, Mod. Bath, Mod. Eat-in-Kit, Front Porch PLUS Lg. LR, Mod. Kit, Mod. Bath 2 BR, Family Room, Gas heat.

**743-2300**

**R.P. MARZULLI CO., INC.**  
REAL ESTATE



## Nancy Swineford, Joseph Leardo wed

Nancy Jean Swineford, daughter of Mr. and Mrs. Robert C. Swineford of Belleville, and Joseph Patrick Leardo, son of Mrs. Ida Leardo of Belleville, were married Feb. 22 in St. Mary's Church, Nutley.

The Rev. Richard Carlson performed the ceremony which was followed by a reception at Richfield Regency, Verona.

The bride, escorted by her father, had Patty Merandino of Clifton as matron of honor. Bridesmaids included Mary Leardo of Carlstadt, Cindie Morel of Belleville and Stephanie Pfister of Nutley. Angela Swineford of Secaucus

was flower girl.

Joseph Tramontana of Belleville was best man. Ushering were Walter Scarpim of Carlstadt, Ralph Leardo of South River and Michael Leardo of Belleville. Michael Swineford of South River was the ringbearer.

Mrs. Leardo is a production secretary with Cairns & Brother, Clifton.

Mr. Leardo, an alumnus of RETS Electronics, Nutley, is an electronic technician with Lear Siegler, Florham Park.

The couple honeymooned in Hawaii and have made their home in North Arlington.



Golden year — Helen and Dan Yaccarino of Belleville celebrated their 50th wedding anniversary Aug. 2 at a party at the Chandelier, Belleville, hosted by their daughter and son-in-law, Addie and John Iannuzzi.

## Teresa Ann Van Horn to wed Anthony Slonim

Mr. and Mrs. Frederick Van Horn, of Pompton Lakes, announce the engagement of their daughter, Teresa Ann, to Anthony D. Slonim, son of Mr. and Mrs. Anthony M. Slonim of Belleville.

Miss Van Horn, a graduate of Pompton Lakes High School and the Mountainside Hospital School of Nursing, is a staff

nurse in the intensive care unit at Clifton Memorial Hospital.

Mr. Slonim, an alumnus of Seton Hall Preparatory School and New York University, is with International Clothiers of Atlantic City and plans to enter medical school next fall.

An August 1987 wedding is planned.



## Metz-Alessio betrothal has been announced

Mr. and Mrs. Harold Metz of Belleville announce the engagement of their daughter, Andrea, to Anthony Alessio, son of Mr. and Mrs. Louis Alessio of Nutley.

The troth was made known June 13 on a horse drawn carriage ride through Central Park, New York City.

Miss Metz, a graduate of Belleville High School, is a receptionist at Data-Tech.

Mr. Alessio, an alumnus of Nutley High School, is a plumber and foreman with Brian Trematore Plumbing & Heating Inc., Clifton.

The wedding will take place April 11 of next year.



Andrea Metz — Anthony Alessio

## Petrina Cicci engaged to wed Robert Voorhees

Mr. and Mrs. Vito Cicci of Belleville announce the engagement of their daughter, Petrina, to Robert W. Voorhees of Caldwell, son of Mrs. Catherine Voorhees of West Caldwell.

A July 1987 wedding is planned.

Miss Cicci is a secretary at RPS Inc., Fairfield.

Mr. Voorhees is a teacher in the Woodbridge Township school system.



Mr. and Mrs. Joseph Leardo — nee Nancy Swineford

## Florence Conway elected president of confraternity

Florence Conway of Belleville has been elected president of St. Peter's Rosary Confraternity.

Other officers include Fran Dacey, vice president; Peg Gibney, treasurer; Lillian DeAngelus, recording secretary; Helen Murray,

publicity and Nancy Pontrella, awards.

The group joined with its moderator and chaplain, Rev. Msgr. John M. Byrne, in reciting a decade of the Rosary and in a prayer for vocations and world peace.

## Stork Club

Cassandra T. Cavanaugh

A first child, a daughter, Cassandra Theresa, was born to Mr. and Mrs. Richard Cavanaugh of Belleville June 27 at Clara Maass Medical Center, Belleville. Birth weight was 9 pounds, 1 ounce.

Mrs. Cavanaugh is the former Natalie Chimento, daughter of Mr. and Mrs. Natalie Chimento. She is a credit representative with Lederle Laboratories, a division of American Cyanamid, Clifton. Mr. Cavanaugh, son of Mr. and Mrs. Richard Dill, is a stock broker with Phillips, Appel and Walden, Wayne.

Brian Dunleavy Jr.

A first child, a son, Brian Jr., was born to Mr. and Mrs. Brian Dunleavy of Union Aug. 1 at St. Barnabas Medical Center, Livingston. Birth weight was 9 pounds, 2½ ounces.

Mrs. Dunleavy is the former Eva Marie Poto, daughter of Mr. and Mrs. Nicholas Poto of Caldwell. Mr. Dunleavy is the son of Mrs. Shirley Dunleavy of Belleville and the late Mr. Edward Dunleavy. Great-grandmother is Mrs. Rita Gerhard of Hollywood, Fla.

- Financial Analysis • Tax Management • Systems
- Over ten years experience
- The accounting needs of the professional practice & small business are a specialty
- Fully computerized services
- Plan now for your filing requirements

**GANYMEDE INC.**  
475 Washington Ave.  
Belleville, N.J. 07109  
751-1266

**BELLEVILLE - KEARNY  
OBSTETRICS - GYNECOLOGY**

**HOWARD GRODER, M.D.  
JEFFREY ROSEN, M.D.**

**HIGH RISK PREGNANCY  
INFERTILITY**

Clara Maass Professional Building  
5 Franklin Avenue  
Belleville, N.J. 07109  
759-0700

Arlington Medical Building  
837 Kearny Ave.  
Kearny, N.J. 07032  
991-1519

"Serving The Community For 40 Years"

## Sisterhood's rummage sale this weekend

The Sisterhood of Congregation Ahavath Achim will hold its fall rummage sale 10 a.m. to 3 p.m. Sept. 14 and 15 at the Congregation, 125 Academy St., behind the Washington Avenue library.

Number 13 buses stop at the door.

Offered for sale will be household items, assorted furniture, books, records, jewelry, clothing for the entire family.

Mrs. Frieda Berkowitz is the coordinator.

State says enrollments may be on an increase

After declining steadily since 1972-73, the state's total public school enrollment may begin to rise again as early as the fall of 1987, according to New Jersey State Department of Education statistics.

Enrollments in the early elementary grades have been increasing since the 1983-84 school year.

## Gerald Oliveto earns masters in corporate finance

Gerald Oliveto of Bloomfield, an alumnus of Bloomfield High School and Rutgers University, received a masters in corporate finance from Fairleigh Dickinson University, Rutherford, this June.

He is a senior financial analyst with Englehardt Corp., Iselin. Oliveto is married to the former Carol Canavina of Belleville. The couple has one child, Gerald Philip, three.

Perming Unisex Haircutting

**Elaine's Hair Designs**

148 Little St.  
Belleville, N.J.  
759-9039

Open Tues. - Sat. electrolysis tinting

**17th Arts & Crafts Festival '86**

CHESTER, NEW JERSEY  
ONE Main Street, Room 24, just east of Route 206

Over 200 Artists and Craftsmen will display and demonstrate their skills

Saturday & Sunday  
SEPT. 13 & 14  
Rain Date Sept. 20 & 21

Children's drawing contest: Win a special prize! Draw a picture of your favorite thing and win a special prize!

**IN THE PAST PRESENT Chester**

**FREE JAZZEXERCISE FOR TWO. OR TWO TRIPS JUST FOR YOU.**

Offer expires 10-30-86

New participants only. Participating locations only.

201-235-9039

**Jazzercise**

FREE JAZZEXERCISE FOR TWO. OR TWO TRIPS JUST FOR YOU.

Offer expires 10-30-86

New participants only. Participating locations only.

201-235-9039

**Rope Limousine Service Inc.**

Featuring Our All New Platinum Mist Super-Stretch

To Make Your Wedding Day Extra Special, Accept A Bottle of Complimentary Champagne!

**660 Broadway, Clifton/Passaic Borderline 472-9173**

• Sat. Color TV • Individual Climate Control  
• Electric Bar • AM/FM Stereo Cassette  
• VCR • Privacy Shades • Sun-Roof  
• Telephone • Special Arrangements

OUR ADDITIONAL SERVICES — Proms Atlantic City Trips — Proms NYC Theater & Dining — Corporate Accounts

Choice of Many Colors

**CompuChic**

**COLOR YOUR HAIR BEAUTIFUL EVERY TIME**

Advanced Computer Technology Makes The Difference

Natural or not, CompuChic's "Color" is the only computerized hair color system. ACTUALLY, when the computerized color matching system is used, the color is the same as the color you see in the hair.

CompuChic's color is the only computerized hair color system. ACTUALLY, when the computerized color matching system is used, the color is the same as the color you see in the hair.

**TOTAL IMAGE HAIRDESIGNERS**  
549 Franklin Ave., Nutley  
235-9299

Hair color so safe so sure so consistently natural

**100% proof of everyday low prices.**  
**Grand Union Consumer Price Finder**  
 Grand Union is matching the lowest priced advertiser.

# FOREVER

U.S.D.A. Choice - Boneless Beef  
**Boneless Chuck Roast**  
 Sold As A Roast Only.  
 Lb. **129**

Nabisco - Regular, Unsalted or Low Salt  
**Premium Crackers**  
 16-oz. Pkg.  
**99¢**

**Super GRAND UNION Coupon**  
 (660) Regular or Diet - Cherry Coke or Sprite or Sunkist  
 One 2-Liter Btl. **69¢**  
No Minimum Purchase Required With This Coupon. Good Sept. 7 Thru Sept. 13. Limit One Coupon Per Customer.

Grade 'A' Fresh - Boneless  
**Perdue Chicken Breasts**  
 Lb. **299**

Chunk Style - In Oil or Water  
**Star-Kist Light Tuna**  
 6.5-oz. Can.  
**59¢**

**Super GRAND UNION Coupon**  
 (661) Whipped, Lightly Salted or Unsalted  
**Land O Lakes Butter**  
 One 8-oz. Cont. **79¢**  
No Minimum Purchase Required With This Coupon. Good Sept. 7 Thru Sept. 13. Limit One Coupon Per Customer.

Assorted Varieties - Dog Food or  
**Kal Kan Cat Food**  
 5 6-oz. Cans **100**

Vine Ripened  
**Sweet Cantaloupes**  
 Large 18 Size Ea. **69¢**

**Super GRAND UNION Coupon**  
 (659) White or Colors  
**Marcal Bath Tissue**  
 One Pkg. of 4 Rolls **59¢**  
No Minimum Purchase Required With This Coupon. Good Sept. 7 Thru Sept. 13. Limit One Coupon Per Customer.

## GRAND UNION PHARMACY DEPT.

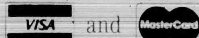
**Your health needs are our main concern!**

Grand Union's computerized Pharmacy means...

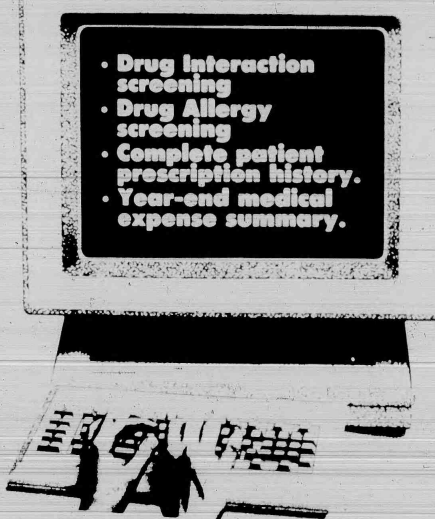
Of course we have all the brands and generics dispensed by our licensed pharmacist, but you'll be on our computer, too. Your medicinal record and needs will be available at a button's touch, for safe reliability. Convenient? Drop off your Rx at The Pharmacy before you shop, it'll be ready when you are. Senior citizens (62 years of age or over), are eligible for prescription discounts of 10% off.

We honor major third party insurance prescription plans.

We gladly accept



**PHARMACY HOURS:**  
 Monday thru Friday 9 A.M. to 9 P.M.  
 Saturday 9 A.M. to 6 P.M.  
 Sunday 9 A.M. to 2 P.M.  
**DIAL 492-9292**



354 Main St. & Joralemon Ave.,

# Belleville

### GRAND UNION PHARMACY DEPT.

(500) **25¢ Off**  
 With This Coupon And Purchase Of One Pkg. - Pump or Tube -  
**Your Favorite Brand Toothpaste**  
Coupon Good Sept. 7 Thru Sept. 13. Limit One Coupon Per Customer.

### GRAND UNION PHARMACY DEPT.

(502) **25¢ Off**  
 With This Coupon And Purchase Of One Package - Assorted Varieties  
**Your Favorite Brand Panty Hose**  
Coupon Good Sept. 7 Thru Sept. 13. Limit One Coupon Per Customer.

### GRAND UNION PHARMACY DEPT.

(504) **\$4.00 Off**  
 Toward The Purchase Of Any New or Transferred Prescription  
including advertised prescription items. Not valid on Grand Union Pharmacy Dept. This coupon does not apply to insurance or government programs. Good Sept. 7 thru Sept. 13. Limit one coupon per customer. Good only for prescriptions of any \$4.00 or less in value. Expiration of date required. Coupon Good Sept. 7 thru Sept. 13. Limit One Coupon Per Customer.

### GRAND UNION PHARMACY DEPT.

(506) **\$1.00 Off**  
 With This Coupon And Purchase Of One 10 cc Vial NPH, Tente or Regular  
**Lilly Insulin**  
Coupon Good Sept. 7 Thru Sept. 13. Limit One Coupon Per Customer.



**MOST GRAND UNIONS ARE OPEN 24 HOURS**  
 CHECK YOUR LOCAL GRAND UNION WINDOW SIGNS FOR EXACT STORE HOURS

Only The Best Always For Less

# GRAND UNION

Not Responsible For Typographical Errors. We Reserve The Right To Limit Quantities For Store Information. Call Toll Free, 1-800-221-1835. Prices and Offers Effective Sunday, Sept. 7 thru Saturday, Sept. 13, 1986.



# Belleville Times SPORTS

By Michael Lambert

## Buc Shots



Before the Belleville varsity season gets underway, it's a good time to make our annual predictions for the NFL season, which commenced last Sunday afternoon.

Last year, this column predicted the L.A. Raiders and San Francisco in the Super Bowl. Obviously, that prediction didn't come true. Can the Bears repeat this season, something that hasn't been done since the Steelers of 1978 and '79. Is this the year the Giants finally make it all the way to the big game? Could the Jets be their opponents when the Super Bowl is played in Pasadena in late January? How devastating will the Cowboys be with Dorsett and Walker in the same backfield? The answers to these questions and many more will not be known for a few weeks, but the avid fan certainly has his or her opinion on the matter.

In the NFC East, the Giants are favorites to win for the first time since the 1960's. They have the all-around talent on both offensive and defense, especially the latter. Can Phil Simms finally lead his team to the promised land? He certainly has passed his way into Giant immortality, but can he win the big game. The Joe Morris situation has finally been resolved (big deal). It's beyond belief where a 28-year-old athlete has the right to not honor his contract all summer long, then, at the last minute, decide to re-sign, even though he had a year left on his old deal.

Poor Mr. Morris was "only" going to make \$190,000 for this season. He said he had to take care of his family, especially with his wife expecting their first child. While that's certainly commendable because everyone wants to take care of his family, a person making that kind of money isn't going to receive much understanding from every day people who make an average salary of \$40,000 or for a family of four. The man had a signed contract, and yet he decided to hold out. He had three mediocre seasons from 1982-84, then a great year last season. The Giants never asked for a refund based on his performance the first three years, did they?

Anyway, the Giants figure to be challenged by Dallas and Washington, with St. Louis and Philly a distant fourth and fifth. The Redskins might be the best team in the East. They have a fine offense and an opportunistic defense. The intangible might be the coaching staff, where Joe Gibbs has done an incredible job. Dallas has that outstanding running game, but there are other question marks with them. Contrary to what Buddy Ryan says, the Eagles will not win the NFC East.

Prediction: Washington 11-5, Giants 10-6, Dallas 9-7, St. Louis 7-9, Philly 6-10.

In the AFC Central, Chicago figures to repeat, however don't expect them to post another 15-1 campaign. The Super Bowl champs are above and beyond the competition here. Detroit is the only team that will make this division respectable.

Prediction: Chicago 12-4, Detroit 9-7, Green Bay 5-11, Minnesota 5-11, Tampa Bay 3-13.

In the AFC West, San Francisco should return to prominence, overtaking a good Rams team. The Niners had an "off" season in '85, finishing 10-4 and losing in the Wild Card game to the Giants. Many experts say that the loss to the Giants really perked up the Niners. The Rams will be consistently strong, especially with Mr. Dickerson running the ball. The Falcons might be the leagues most improved team, and don't count out the Saints. They could be a much better team.

Prediction: San Francisco 11-5, Los Angeles 10-6, Atlanta 7-9, New Orleans 6-10.

Over in the AFC, the eastern division looks like a dog fight. The Miami Dolphins had a rocky start, but don't expect them to be down too long. The Jets looked good against a feisty Buffalo team, with Ken O'Brien performing well for the Jets at quarterback. New England was solid in beating Indianapolis. Buffalo might surprise a few, especially with Jim Kelly throwing the ball so well. The Colts aren't very good and might not win a game in the division.

Prediction: Jets 11-5, New England 11-5, Miami 10-6, Buffalo 5-11, Indianapolis 2-14.

The AFC Central has been a wide open division over the past four years. This season, only the Steelers look unable to make a serious run. Houston appears ready to challenge and Cincinnati and Cleveland have good talent. The Bengals will probably get the edge in this division, with Cleveland and Houston right behind.

Prediction: Cincinnati 10-6, Cleveland 9-7, Houston 7-9, Pittsburgh 4-12.

The AFC West has always been one of the toughest in football and this year will be no exception. Denver and the L.A. Raiders played a whale of a game last Sunday and Seattle was tough in blanketing Pittsburgh. San Diego has the explosive offense, as witnessed by its 50 points against Miami, the most ever against a Don Shula-coached team in Miami. Even Kansas City could be competitive in the division.

Prediction: L.A. Raiders 11-5, Denver 10-6, Seattle 9-7, San Diego 8-8, Kansas City 8-10.

In the playoffs, the wildcard game in the NFC will be the Giants and Rams, with the Giants winning. The Giants will then play Chicago while San Francisco battles Washington. The AFC title game should be San Francisco and Chicago. In the AFC, a wildcard game between New England and Denver. New England should win and play the Raiders while Cincinnati battles the Jets. The AFC title game could come down to the Raiders and Jets. For the Super Bowl, a dream match up between the Raiders and Chicago Bears.

### Last Weeks Quiz

The University of Pittsburgh won the NCAA football championship in 1956, beating Georgia, 27-3 in the Sugar Bowl. Tony Dorsett led the Panthers that year and won the Heisman Trophy.

### For This Week

As mentioned earlier, San Diego's outburst against Miami last week was the most points scored against a Don Shula-coached team in Miami. When Shula coached in Baltimore, his team was victimized for 52 points in a game in 1969. Name the team who beat the Colts that day, the score and the winning teams quarterback and head coach.

## Expect good things this fall from BHS volleyball ball team

When a team puts together four straight winning seasons and advances to the state semi-finals the past two years, players, coaches and fans of that team begin to expect good things every year.

Such is the predicament of the Belleville volleyball team, alias "Grace Worley's Wizards" who enter the 1986 season with a rugged schedule and high hopes.

The team has been one of the most successful varsity entries at Belleville High from the period 1982-85. The past two years, the girls have made it all the way to the state semi-finals where it faced defeat in both instances to Fair Lawn High.

"We're a little green on ex-

perience this year," Worley said last week. "We open on September 19 (against Paramus at home) and our schedule is tough. We got 'em all."

All, as Worley says, are the NNJL rivals from both Essex and Bergen Counties. All tolled, the team has a whopping 28 regular season matches scheduled, so a loss here and there should not keep the team down. There's too many matches to worry about one.

"I think we have a good chance for a fifth straight winning season," Worley said. "We have some good players back from last years team and many of our girls attended camp. Some of them even attended two volleyball camps."

Three seniors lead the way. Christine Melillo, Renee Petinoe and Trish Tramutola should provide leadership and experience.

Melillo is tall and should be strong at the net. Petinoe is a smart player who excels in the back while Tramutola is effective in her service game.

Simone Edwards, a sophomore, has excellent leaping skills. She is an outstanding all around athlete who should do well in the starting lineup.

Junior Quynh Mai had an impressive campaign in 1985 and her experience will be a big factor this season. She is a smart player who rarely makes mistakes on the floor.

The crucial sixth position in the varsity lineup is being contested by three good athletes. Juniors Carolyn Giuffrida and Tina Miller and sophomore Kathy Eng are all vying for a shot at the starting lineup.

Worley, as has been her custom in previous years, will not hesitate in rotating her players, giving a lot of girls a chance to play varsity. With the demanding schedule this year has presented, you can be sure that Worley will be using a number of players.

"The kids are in good shape," Worley said. "We'll be facing a lot of teams this year, many of which I don't know about. It should be an interesting year."

## Senesky cautiously optimistic about varsity football squad

Although the team has not scrimaged another varsity squad, head football coach John Senesky is cautiously optimistic about his teams performance in practice thus far.

The Bucs were scheduled to face Bergen Catholic and West Orange last Saturday morning in a tri scrimmage, however rain forced postponement of that game. It was rescheduled for last Tuesday, at Bergen Catholic. The Bucs will face Columbia High School in a scrimmage this Saturday, at 10 a.m. from Columbia High. The opening game of the '86 campaign is set for Saturday, September 27, when the Bucs travel to Paramus for a 1:30 p.m. kickoff.

"Until we face another team, it's hard to say how we're doing," said Senesky, "however, the kids are working hard in practice, the attitude is excellent and we have some experience and size this year."

Senesky also reported that the team was ahead of last years pace at this time. As noted in last weeks issue, the team fared very well in the annual pre-season decathlon and the players are in excellent condition.

Last season, the Bucs were slim on experience, and it showed, especially on offense. This season, the players return with a year under their belt and much more confidence.

"The maturity is evident on the team," Senesky said. "We have a lot of seniors, twice as many as last year. We also have the luxury of depth at different positions, something we didn't have last year."

There are some familiar names returning at key positions. On the offense, the quarterback position is a two way battle between senior Dan Senesky and junior Jeff Spisbury. Both men saw action last year and both have improved

since the end of last season.

In the backfield, Frank Montagna and John View are working in the fullback slot while Jay Marchese and Joe Delle Monace will see time at left halfback. At right halfback, Jim Dunphy, Lou Lucante and Craig Jackowski have been working. All of those players saw time last season and should be key ingredients to the '86 team.

About the only area where the Bucs need to rebuild from 1985 is the offensive line. However, Senesky is happy with the play of the line candidates, many of which will play both offensively and defensively.

Joe Coviello, Gerard Corbo, Marc Criscione, Nick Cardillo and Carmine Iacullo have performed well thus far.

On defense, Jackowski, Lucante and John Magi will lead the linebacking corps. Senesky is very happy with his secondary, which features Al Best, Delle Monace, Dunphy and Marchese.

In addition to the returning players, there are sophomores and juniors vying for additional starting positions. Senesky, and his staff are working with the players, teaching them different positions in the hope of adding depth to key areas. The staff doesn't have to be reminded of the 1984 campaign when the Bucs started out 6-1, but were besieged by a rash of injuries to key starters in week seven and struggled the rest of the way compiling a 6-4 final record.

"As I said," Senesky commented, "we're looking pretty good right now, but how good are the other teams that we'll be playing? The NNJL is always a tough conference and there isn't an easy game on the schedule."

Indeed, the conference looks impressive. There's more on the NNJL in this week's Bucs Shots, but if previous years are any indication, the 1986 season will be another rough and tumble campaign.

## Cross country Bucs open campaign against neighboring Clifton next Friday

A good turnout and some experienced athletes lead cross country coach John Tosato to expect optimism toward the 1986 season.

The Bucs open the campaign next Friday afternoon, at Clifton in a 4 p.m. start.

"We're putting things together," Tosato reported last weekend. "We've practiced four days thus far and we're emphasizing long, slow distance. We just want to get the kids conditioned for endurance."

Tosato also noted that some prospective athletes have not been physically yet, and once they come out for the team, he'll have more to work with.

Right now, the team is led by two seniors, Craig Burden and John Zurlo.

Burden, a four year member, has been an outstanding runner in both cross country and track. The senior is an outstanding miler for the spring track team and has been the top runner for the cross country squad since his sophomore year.

"He is in good condition," Tosato said of Burden. "He's right where he left off last spring. He should be pretty well."

Zurlo has also been doing well. The senior has developed into a fine runner and should be a big asset to the tea this fall.

Juniors Greg Moriello and Bob Schiebel will also help. Moriello really came around during the track season last spring. He runs cross country, indoor and outdoor track for Tosato and should challenge for a top spot this fall.

Schiebel also has the potential to be a top runner for the Bucs. The top five positions, including sophomore David

Rosamilia, should be very competitive. Not to be outdone, Rosamilia should be right in the pack. He ran track last spring and could also pick up key points that will be necessary in those close meets.

Tosato is hoping that the girls will have a full team this season. Currently, Joyce Luongo, a junior and senior Donna Lee Daudelin lead the roster, with

some freshman and sophomores learning the ropes.

Luongo is coming off two outstanding all purpose seasons, having competed in cross country, indoor and outdoor in her freshman and sophomore years. She is quickly earning the respect of opposing teams and should write her name in the same book as former Belleville running stars Dana Caruso, Sue Smith, Barb Gundry and Patty Bliss.

"The team is priming for the big meets, mainly the counties, conference and invitationals," Tosato said. "We have a tough conference schedule and will take it one meet at a time."

Although the final roster is not complete, the Bucs have the potential to win some conference meets this fall. The experience is there and certainly, the team has good talent to carry it through the fall campaign.

## Outlook good for NJIT soccer

The Highlanders, 7-11 last season, will be immediately tested with three pre-season games in a meeting, nationally ranked Division 3 Trenton State, Division I Seton Hall and Rutgers-Newark.

The regular season will get under way Sept. 6-7 with the Nike tournament, hosted by Glassboro State, which N.J. Tech will meet in the first round. Westchester and Lock Haven complete the field.

The challenging schedule also includes Division 3 powers Kean and Drew and Scranton. The Highlanders seek their first Independent Athletic Conference title, having been runner-up to Stevens Tech last year.

Horace Chasse, a junior from East Orange who possesses outstanding ball skills, and transfer Nader Hajji, a good finisher, will spearhead the front line.

DePrizio a "hustler". Senior Peter Parelli of Nutley is the chief distributor in the midfield. He'll be joined by

hustling Rich DePrizio of Belleville, Jeff McEntee of Florham, and transfer Frank Morales, who is a good scorer. Jose Rego of Newark is a talented defender.

The top defender is senior Hani Shouga of Prospect Park, an aggressive leader. Senior Ed Ghanie of Nigeria adds ball skills while Jersey City senior Johnny Bastides adds quickness. Rounding out the defense are senior Armon Bedrossian of Rockaway, a hard worker, and sophomore Asdrubal Franco of Morristown, a consistent player.

The goal will be shared by senior Wes Vassiliades, a senior from Fairview, Dennis Simbo, a junior from Essex County College, and junior Alex Carrion of Jersey.

"The bench includes skilled players and with the addition of freshmen and transfers, we have a well-rounded team full of great expectations," Borja said.

## Gym Bucs: Good news, bad news...

First, the good news. Buccanier gymnastics coach Ray Iannuzzi reports an excellent turnout for the 1986 season. The enthusiasm and optimism for the season is excellent and the girls have some good athletes returning from last years successful entry.

Now, the bad news. One of the athletes not returning is Kelli Glunk, who set every Belleville gymnastics record in the book last season. On top of that; the season starts next Friday afternoon, at Clark High School, against one of the better teams in Northern New Jersey.

"The season is coming too quick," Iannuzzi said last

weekend. "Little, by little, we're coming around. We had an excellent turnout (21 girls came out for the team) and we have a lot of girls back from last year."

In 1985, the team posted a 6-4 record, the first time in the programs history that it finished above .500.

The team is led by three seniors, team captain Danielle Lyman, Alise Davies and Tina Charles. Lyman had a good season in '85 and Davies has improved steadily since her sophomore year. Charles should also be effective this year.

Juniors Renee Baron, Dina Cardinale and Erica Townes will

be key members of the '86 team. Iannuzzi has a large contingent of sophomores, led by Joell Veltre.

In 1985, as a freshman, Veltre advanced all the way to the state sectionals. She and Glunk posted outstanding campaigns last fall and Veltre is hoping to continue her success this season.

"She's improved," Iannuzzi said of Veltre. "How much real-ly won't be determined until the season starts. She looks pretty good right now."

Other sophomores to watch are, Angela Belhome, Andrea Lemongello, Roseanne Miele, Georgina Marano, Michele

Quick and Melissa Muscara.

Iannuzzi has a host of freshman out for the team, girls who are still learning the system. There will be more on those future stars in next weeks issue.

"We still have girls coming out for the team," the coach said. "I'm very happy with that. The interest is definitely there. The sport has picked up popularity, especially after the season we had last year. We had some good fun turnout for our home matches."

It's difficult to predict how successful the girls will be this fall, but if there is strength in numbers, the gymnasts should fare very well in 1986.

## Navy Seaman Halfacer completes Navy training

Navy Seaman Kellie S. Halfacer, daughter of John W. Halfacer of 58 Hornblower Ave., Belleville, has completed recruit training at Recruit Training Command, Orlando, FL.

During Halfacer's eight-week training cycle, she studied general military subjects designed to prepare her for further academic and on-the-job

training in one of the Navy's 85 basic fields.

Halfacer's studies included seamanship, close order drill, Naval history and first aid. Personnel who complete this course of instruction are eligible for three hours of college credit in Physical Education and Hygiene.

She joined the Navy Reserve in April 1986.

## Pvt. Lanigan reports for duty in Germany

Army Pvt. Scott T. Lanigan, son of Lee Lanigan of 443 95th St., Brooklyn N.Y. and Frank T. Lanigan of 31 DeWitt Ave., Belleville, has arrived for duty with

the 38th Signal Battalion, West Germany.

Lanigan is a communications system operator.

## Belleville High School Lunch Menu

The following items are available in the high school cafeteria for lunch from September 15 to Sept. 19. White, chocolate or skim milk is available.

Menu is subject to change without notice. Bon Appetit!

Sept. 15 — Pizza burger/bun, broccoli — cheddar quiche, saffron — steatrol, whipped potato, apricot halves, milk, sub base combo, bologna & cheese.

Sept. 16 — Yin tacos left & Tom pastriamante pizza, later

rounds, fresh fruit, milk, sub base combo, ast. cold cut sub.

Sept. 17 — Bacon cheeseburger, mozzarella sandwich, roll, hot long hot dog/bun, macaroni salad, mixed fruit cup, milk, sub base combo, turkey & provolone.

Sept. 18 — Turkey club sloppy joe/bun, pepperoni pizza, french fries, peach slices, milk, sub base combo, salami & provolone.

Sept. 19 — Cheese steak/roll, spinach quiche, chicken parm/bun, cole slaw, applesauce, milk, sub base combo, tuna sub.

### GANTNER'S INC.

160 Franklin Avenue • Nutley

Hardware — Plumbing — Electrical Supplies  
Paint — Home Furnishings — Luggage — Linens

### Store Wide Sale

20% OFF

All Garden Tools, Garden Hose & Sprinklers

All Rubbermaid Products, Pictures & Frames

All Cutlery, Scissors & Knives

All Corningware, All Faberware & T-Fal

All Basement Items

Toilet Seats, Sheets, Towels, Lamps, Lamp

Shades, Luggage, Throw Rugs, Bedding,

Pillows, Bath Accessories

All Fisher Price Toys

40% to 50% Off All Children Clothes

Mon. - Fri. 9 AM - 8:15 PM

Tues. - Wed. - Thurs. - Sat. 9 AM - 5:45 PM

667-6622

### RESOLUTION

BELLEVILLE PLANNING BOARD  
BELLEVILLE, NEW JERSEY

RESOLVED BY THE PLANNING BOARD OF THE TOWNSHIP OF BELLEVILLE, COUNTY OF ESSEX, STATE OF NEW JERSEY:

WHEREAS, an application has been submitted by ALAN PAPP for a minor subdivision of 221 Main Street, Block 21, Lot 3, between Academy and Holmes Street in the 45 Line;

WHEREAS, the applicant proposes to subdivide the existing 12,190 sq. ft. lot having frontage on Main Street and Ralph Street into one 5,300 sq. ft. lot having frontage on Ralph Street and one 6,700 sq. ft. lot with frontage on Main Street. There are an existing garage and single family home on the site. The applicant proposes to raise the garage and provide a driveway, easement from Ralph Street via the existing ten foot wide concrete driveway in order to access the rear of the lot to Main Street.

WHEREAS, the Board has determined that relief requested by the applicant, ALAN PAPP, can be granted without substantial detriment to the public good and without substantially impairing the intent and purpose of the comprehensive ordinance of the Township of Belleville, New Jersey.

NOW, THEREFORE, BE IT RESOLVED, that the Planning Board of the Township of Belleville, New Jersey, hereby grants the application with a variance for the raising of the garage, with the following conditions:

1. The new plan must show the exact location of the Main Street garage.

2. An easement for the driveway, garage and access to the subdivided lots.

3. Said easement to be reviewed by the Planning Board and approved by the Township of Belleville.

4. A 10-foot maintenance easement, adjacent to the driveway, shall be indicated by 24-inch parties in connection with the new plan.

5. The names and address of all property owners adjacent to the lot within 200 feet be indicated on the plan.

6. A survey and site plan, and contours to determine the slope and natural drainage of the site be incorporated on the plan.

7. Township Engineer should review and approve application.

8. Approval by the Essex County Planning Board.

9. The Ralph Street property have no access to the rear of the property other than via the easement.

10. The Ralph Street residence should not be sold, or have a lot built in garage. The driveway for the lot on the north side of the lot 20 feet to the north of the existing driveway.

Any built-in garage for the Ralph Street property shall be for sale only. Any existing required parking lot must be in the rear and comply with the Township of Belleville, New Jersey.

Sept. 1986 Fee: \$32.43 No. 86-319

THOMAS J. DALESSIO, Sheriff

### SHERIFF'S SALE

SUPERIOR COURT OF NEW JERSEY  
CHANCERY DIVISION, ESSEX COUNTY  
DOCKET NO. F 4256-83 NEW YORK GUARANTY MORTGAGE CORPORATION, PLAINTIFF vs. ANTHONY GUCCIONE, et al. DEFENDANTS. Execution For Sale of Mortgaged Premises.

By virtue of the above stated writ of Execution, to me directed, I shall expose for sale by Public Auction, in SHERIFF'S OFFICE, Essex County Courthouse Building in Newark, on Tuesday, the 7th day of October next, at one o'clock P.M. (Preceding Time).

More property, City of East Orange, County of Essex.

Shant address: 176 Lincoln Avenue, Newark, N.J. 07102.

Lot and Block: Lot 3 Block 119 on the Map.

Nearest cross street, Henry Street.

A full legal description can be found in the Office of the Register of Deeds in Newark in book 4929, page 238.

A DEPOSIT OF 20% OF THE BID PRICE IN CASH OR CERTIFIED FUNDS IS REQUIRED AT THE TIME OF SALE.

The approximate amount of the judgement to be satisfied by said sale is the sum of ONE HUNDRED SEVENTY-THREE DOLLARS AND ONE CENT, \$173.00, together with the costs of the sale.

The Sheriff reserves the right to adjourn the sale from time to time as provided by law.

THOMAS J. DALESSIO, Sheriff

ALVIN D. MILLER, Attorney

Belleville Times  
Sept. 11 - 8:24  
Oct. 2, 1986  
Fee: \$75.20 No. 86-330

SHERIFF'S SALE

SUPERIOR COURT OF NEW JERSEY  
CHANCERY DIVISION, ESSEX COUNTY  
DOCKET NO. F 4212-83 HERMAN J. DEGLER, PLAINTIFF vs. JANETTE PERRY and JANET WHITE, et al. DEFENDANTS. Execution For Sale of Mortgaged Premises.

By virtue of the above stated writ of Execution, to me directed, I shall expose for sale by Public Auction, in SHERIFF'S OFFICE, Essex County Courthouse Building in Newark, on Tuesday, the 7th day of October next, at one o'clock P.M. (Preceding Time).

All other real estate parcels of land and premises, where being and being in the City of East Orange in the County of Essex and State of New Jersey, more particularly located herein.

BEGINNING on the South-East of Rhode Island Avenue, formerly Maple Avenue, at a point 14 feet from the Township line of the same and Oak Street in a westerly direction, thence (1) Southerly, or right angles to Rhode Island Avenue, formerly Maple Avenue, 100 feet; thence (2) Westerly, parallel with said Avenue, 25 feet; thence (3) Southerly, or right angles to said Avenue, 200 feet to the street thence (4) Westerly, along the said 25 feet to the place of BEGINNING.

SUBJECT to zoning ordinances, restrictions of record and easements, if any, and such state of facts as an accurate survey may disclose.

COMMONLY known as 93 Rhode Island Avenue, East Orange, N.J.

A DEPOSIT OF 20% OF THE BID PRICE IN CASH OR CERTIFIED FUNDS IS REQUIRED AT THE TIME OF SALE.

The approximate amount of the judgement to be satisfied by said sale is the sum of TWENTY-EIGHT THOUSAND EIGHT HUNDRED DOLLARS AND TWENTY CENTS, \$28,800.20, together with the costs of this sale.

The Sheriff reserves the right to adjourn the sale from time to time as provided by law.

THOMAS J. DALESSIO, Sheriff

Greenberg, Macgill, Emery, Saporito, Ditch and Fahnor, P.A., Attorneys

Belleville Times  
Sept. 11 - 8:25  
Oct. 2, 1986  
Fee: \$103.40 No. 86-321

### The Choice of the People



7 Days  
24 Hours  
Delicious  
Salad Bar  
Italian  
Specialties!  
Steaks & Chops

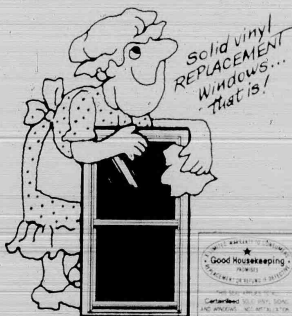
All baking done on premises • Homemade pastries  
Children's Menu Available  
Special Breakfast Menu 6-11 a.m.  
Daily Business Lunch 12 a.m-3 p.m. Served for Open 11 a.m-10 p.m.  
ALA CARTE and COMPLETE DINNER MENU

We're Always Open

**WILLIE'S**  
DINER-RESTAURANT

9 State St., Bloomfield Call 748-7414

## We Do Windows



Thanks to the advanced technology of CertainTeed, a pioneer in the development of vinyl building materials, we now do replacement windows. And we do them right -- with virtually maintenance-free solid vinyl extruded frames and insulated glass to greatly reduce energy loss. Phone us for more details.

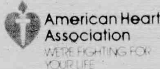
**CertainTeed**

**PURA-TEX CORP.**



Est. 1951

191 Belleville Ave.  
Belleville, N.J. 07109  
759-2200



(201) 759-9969 Licensed Dealer  
**BULLET HOLE**  
Guns, Ammo, reloading, shooting equipment

Collector Guns  
Buy — Sell — Trade  
338 Washington Ave.  
Belleville, N.J. 07109



## RULES GOOD! LOOKS BAD!

Prices AS LOW AS  
**\$99.95**

- Thousands of color choices
- Oven-baked finish
- Free estimates
- Expert body repair
- Written guarantee

MAACO Auto Painting & Bodywork are independent franchisees of MAACO Enterprises. Prices and hours may vary.

**Maaco**  
Auto Painting

NUTLEY  
113 E. Center St.  
(behind 67 E. Centre St.,  
btwn. Washington Ave. & River Rd.)  
235-0801

minutes via Rte. 21 from  
**Belleville/Nutley**

The TRI-STATE  
Area's Largest

**HONDA  
PONTIAC  
VOLVO  
Dealer**

COME IN FOR SUPER BUYS ON  
SUPER NEW & USED CARS

You've heard us  
on WYNN and  
WINS radio

**City  
Motors**

River Drive at Rte. 21  
Passaic Park

**777-1600**



**Saturday  
September 13, 1986**

Rain or Shine...  
Come stroll and shop the  
**FABULOUS BARGAINS!**  
Values galore in every store!  
Plus...Clowns/Balloons •  
Dixieland Jazz • Food, Fun  
and much more!

**UPPER MONTCLAIR**

SPONSORED BY THE RETAIL DIVISION OF THE MONTCLAIR CHAMBER OF COMMERCE



# Crown Chevrolet has

# 2.9%

# FINANCING

## ON EVERY NEW 1986 CHEVROLET IN STOCK!

...enough said.

**REBATES**  
**UP TO \$1,000.00**

**OVER 110**  
**BRAND NEW**  
**CHEVROLETS**  
**IN STOCK!**

### Crown's Suburban-Traded Cars

<p><b>'85 CAVALIER</b> CHEVY, 4-dr. red, 4-cyl. auto trans, pwr steering &amp; brakes, rr defrost, stereo. 5420 miles. Like New!</p> <p><b>'6588</b></p>	<p><b>'84 WAGON</b> CHEVY CELEBRITY, black, roof rack, 6-cyl. auto trans, pwr steering &amp; brakes, air cond, rr defrost, stereo, 17,923 miles. Showroom new!</p> <p><b>'7988</b></p>	<p><b>'82 CITATION</b> CHEVY, 4-dr. hatchback, 6-cyl. auto trans, pwr steering &amp; brakes, air cond, rr defrost, stereo, 40,068 miles. Great MPG!</p> <p><b>'4288</b></p>	<p><b>'82 MONTE CARLO</b> CHEVY, 2-dr. light red, 6-cyl. auto trans, pwr steering &amp; brakes, air cond, rr defrost, AM/FM stereo, 45,693 miles. Super sharp!</p> <p><b>'5988</b></p>
<p><b>'85 CUTLASS</b> OLDS, 4-dr. V-6, auto trans, pwr steering/brakes/windlocks, air cond, rr defrost, stereo, tilt, 18,708 miles. Stock No. 3054P. Super shape!</p> <p><b>'8988</b></p>	<p><b>'83 SKYHAWK</b> BUICK T-TYPE, 4-cyl. auto trans, pwr steering &amp; brakes, air cond, rr defrost, stereo, 45,577 miles. Flawless cond!</p> <p><b>'5588</b></p>	<p><b>'82 GRAND PRIX</b> PONTIAC, 2-dr. red, stereo, air cond, rr defrost, pwr steering &amp; brakes, auto trans, 6-cyl. 56,222 miles. A real beauty!</p> <p><b>'5988</b></p>	<p><b>'81 WAGON</b> FORD ESCORT, blue, 4-cyl. 4-spd. man. trans, pwr steering &amp; disc brakes, air cond, rr defrost, AM/FM, 60,216 miles. Must see!</p> <p><b>'2588</b></p>
<p><b>'84 WAGON</b> CHEVY CAPRICE, 9-pass., rr rack, V-8, auto trans, pwr steering/brakes/seats/windlocks, air cond, rr defrost, stereo cassette, tilt, cruise, 42,508 miles. Perfect family car!</p> <p><b>\$8988</b></p>	<p><b>'83 CENTURY</b> BUICK, 2-tone, 4-dr. 6-cyl. auto trans, pwr steering/brakes/wind, air cond, rr defrost, stereo, 52,631 miles. Stock No. 2906R. Excellent Cond!</p> <p><b>'7988</b></p>	<p><b>'82 LYNX</b> MERCURY, 4-dr. 4-cyl. eng. auto trans, pwr steering &amp; brakes, air cond, stereo, 47,159 miles. Perfect!</p> <p><b>'3988</b></p>	<p><b>'81 DELTA 88</b> OLDS, 4-dr. V-8, auto trans, pwr steering/brakes/seats/windlocks, air cond, stereo, rr defrost, 42,636 miles. Terrific!</p> <p><b>'5988</b></p>
<p><b>'84 IMPALA</b> CHEVY, 4-dr. 6-cyl. auto trans, pwr steering &amp; brakes, air cond, rr defrost, stereo cassette, 22,116 miles. A real beauty!</p> <p><b>'7988</b></p>	<p><b>'82 BONNEVILLE</b> PONTIAC, 4-dr. 6-cyl. auto trans, pwr steering &amp; brakes, air cond, rr defrost, stereo, 52,612 miles. Stock No. 3051P. Flawless cond!</p> <p><b>'6488</b></p>		

**NO**  
**GIMMICKS**  
**NO HIDDEN**  
**CHARGES**

Every car is in stock, ready for immediate delivery. No need to wait for weeks. The car you see is the car you get.

Every price includes freight and prep. excludes tax and MV Fees.

**ACT NOW!**

**FIRST COME - BEST CHOICE**

2.9% Financing for 36 mos. on all cars and most trucks (Astro Vans excluded). 4.8% for 48 mos. Or cash rebates of \$1,000 on Corvettes, other rebates on other models.

Offer expires 10-1-86.

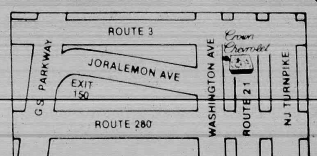
# Crown Chevrolet

"New Jersey's Chevrolet Underpricer"

514 Washington Avenue, Belleville (201) 759-4200

**Easy to Reach**

Crown Chevy is just minutes from the Turnpike and Interstate 76. Detailed directions.



## THOUGHT FOR THE DAY

I do my thing,  
and you do your thing.  
I am not in this world  
to live up to your expectations  
And you are not in this world  
to live up to mine  
You are you and I am I,  
And if by chance we find  
each other,  
It's beautiful.

— Frederick S. Perls

## Who's spiritual?

What does it mean when one says, "I'm spiritual?" What are the marks of true spirituality? How do we become more spiritual?

Spirituality has been a misunderstood concept throughout the entire scope of God's dealings with mankind. The Pharisees purposed to be spiritual by their showy religious acts. They prayed loud and long on the street corners. They banked their money into the coffers. They dressed in black and painted their faces with ashes to appear spiritual. The sad part is that this was hypocrisy, not spirituality.

The Sadducees tried to be spiritual by long faces that shunned every pleasurable and enjoyable experience. Such depressive living was not spirituality. It was pure misery.

One strand of Christianity tried to achieve spirituality by cloistered monastic living. They tried to be spiritual by ascetic ways. Some forbade marriage because it was non-spiritual. Others slept on nails to prove that they were spiritual. That is not spirituality.

The question of spirituality is still in debate today. Many stress legalism whereas others stress the use of Christian liberties as the mark of true spirituality. Being spiritual is not the length of your prayers or the frequency of your fasts. Just because you shut out the world and spend all your time praying and reading the word of God is not spirituality.

I have been told by people that they could not come to church because they had to stay home and pray. Bible reading and fasting are the roads that lead to true spirituality. True spirituality is the ability to temper all of your activities with spiritual principles. Jesus spent most of his time on earth dealing with people.

A spiritual man is one that does his work well and allows it to reflect Christ. He does not neglect his family to become spiritual. As a father he loves and cares for his children. He sees that they enjoy life and Christian activities. I know a husband and wife that raced to church every night and left their children home with baby sitters. In their quest for spirituality they raised up heathen children. That is not spirituality.

True spirituality is reflected by regularly in your service to God. Attending church regularly and giving your offering consistently is a mark of spirituality. It isn't in itself, but it is the fruit of a spiritual person. He who can apply Christ to everything he does is a spiritual person.

Pastor Gerald Fortunato

By Pastor Gerald Fortunato



## Religious Viewpoints

## THOUGHT FOR THE DAY

"If there is righteousness in the heart  
there will be beauty in the character.  
"If there is beauty in the character  
there will be harmony in the home.  
"If there is harmony in the home  
there will be order in the nation.  
"When there is order in the nation  
there will be peace in the world."

Chinese Proverb

## Train stops in time

The British express train raced through the night. Its powerful headlamp spearing the black darkness ahead. The train was carrying the famous Queen Victoria.

Suddenly the engineer saw a startling sight. Revealed in the beam of the engine's headlamp was a weird figure in a black cloak standing in the middle of the tracks and waving its arms. The engineer grabbed for the brakes and the train came to a halt.

If he had not heeded the ghost by figure, the train would have plunged into the water. While the bridge and tracks were being repaired, the crew made a more intensive search for the strange flagman. But not until they got to London, did they solve the mystery.

At the base of the engine's headlamp, the engineer discovered a huge death moth. He looked at it a moment, and then on impulses wet its wings and pasted it to the glass of the lamp.

Climbing back into his cab, he switched on the lamp and saw the "flagman" in the beam. He knew the answer now; the moth had flown into the beam, seconds before the train was due to reach the washed out bridge. In the fog, it appeared to be a phantom figure, waving its arms.

When Queen Victoria was told of the strange happening she said, "I'm sure it was no accident. It was God's way of protecting us."

God's word the Bible promises: "He that dwelleth in the secret place of the most high shall abide under the shadow of the Almighty" (Psalm 91). In order to have God's protection, we need to make sure we are in the family of God through the new birth by placing our trust in God's Son, the Lord Jesus Christ. "Except a man be born again, he cannot see the kingdom of God" (St. John 3). How wonderful to be able to say, "The Lord is MY shepherd." Yes, He is mine and I am His because I have invited Christ into my life (St. John 1:12).

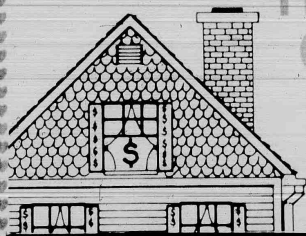
By Rev. Robert Paul

## FAST ACTION—ONE WEEK APPROVAL!

SPECIAL LOW RATE

NO LEGAL FEE!  
NO APPRAISAL FEE!  
NO POINTS!

Only  
The Bank with Heart  
gives you H.O.P.E.™



Home  
Owner  
Preferred  
Equity

H.O.P.E.™ is your personal line of credit from The Bank with Heart. It lets you turn your house into cash—for any purpose. Call our H.O.P.E.™ line for more information.

FOR FAST ACTION,  
CALL TOLL FREE 1-800-THE-LOAN

THE TRUST COMPANY  
OF NEW JERSEY

THE BILLION DOLLAR BANK WITH HEART

Executive Office 35 Journal Square, Jersey City, NJ 07310-4200

Offices throughout Bergen, Essex, Hudson, Middlesex, Morris &amp; Passaic Counties • Montclair, E.T.L.

CLIFTON • PASSAIC PARK • NUTLEY • BELLEVILLE • LINCOLN PARK • LITTLE FALLS • WEST PATERSON

## THE FAMILY SCHOOLHOUSE

"Come join our family"

Thank you... for making this a successful year. We wish all children could join our family but we are full at the present time. Please feel free to call for information about available openings in the near future.

Ages 2½ - 5  
Preschool Education  
8:00 - 4:30 Full & Half Days

36 Broughton Avenue  
Bloomfield  
429-0870

## WALL ST. CAFE "STEAK HOUSE"

"We Serve Meals The Old-Fashioned Way"



## INTRODUCING:

24 oz. Sirloin	\$ 8.95
48 oz. Sirloin	17.00
Seven Lobster Tails	9.95
16 oz. Swordfish Steak	9.95
Chicken Wall Street	8.95
24 oz. whole broil - broiled in fine scampi sauce	

## ALSO FEATURING:

Wall Street Combo for 2	24.00
24 oz. Sirloin, 16 oz. Swordfish Steak and 4 Lobster Tails	

OUR PORTIONS ARE SHOCKING  
So Be Sure To Bring Your Appetites!

1050 Wall Street, Lyndhurst, N.J.

Breakfast and Lunch Served Daily

Hours: Mon. thru Sat. 4 to 11 P.M.

939-1188

## Dancesation

The Ultimate In Dance

Low Impact  
Aerobics  
at  
Dancesation  
751-5259

Director - Susan Marrazzo DeVincento

382 Union Avenue  
Belleville, NJ 07009Classes Start Sept. 6th  
751-5259

## Kelly holds public hearing on senior equity plan

Assemblyman John V. Kelly, Chairman of the Assembly Housing Committee, held a joint public hearing with the Senior Citizens Committee to discuss a plan that would allow senior citizens to convert the equity they have accrued on their houses into income.

The public hearing was held on August 13 in the Bloomfield Civic Center to record public testimony on the options available to senior citizens in light of the increased costs of maintaining a residence.

Elderly homeowners are "property-rich, but cash-poor," said Kelly. "As Chairman of the Housing Committee, I am aware of the problems facing New Jersey residents seeking safe and affordable housing."

Kelly has introduced legislation creating a senior citizen property tax relief fund. A 2516 would provide low interest loans to persons earning less than \$10,000 annually who are over the age of sixty-five or permanently and totally disabled. A 2516 was one of the bills addressed at the hearing.

The hearing also focused on questions such as other home equity conversion options currently available, whether state government should become involved with the financing of these types of loans, what consumer safeguards are necessary and how these type of financial programs can be presented and made appealing to senior homeowners.



# Tax hike blasted at commission meet

(continued from page 1)

week.  
The current project, although the board says it will cost less than half of that of the original project, appears to be losing support as well.

Commissioner of Public Safety Ralph DiRuggiero told the people that this project will add about \$50 to every homeowner's tax bill for the next 20 years.

Throughout the meeting, citizens in the audience protested from the seats saying, "We don't want it" time and time again.

During the meeting, which lasted well over three hours, the conduct of two of the four board members (Commissioner of Public Works Joseph Grande was absent due to illness) was also questioned. Various remarks made by Mayor Marotti and Commissioner McGreevey were greeted harshly by the townspeople who replied with comments like "That's no way to act," and "Did you hear what he said?"

Zinna actions addressed

Also during the public hearing

portion of the meet, CCB president Frantantoni addressed the controversy surrounding Municipal Judge Frank Zinna, who, during his tenure as municipal at-torney allegedly failed to reply to key charges of illegality made by the CCB.

Frantantoni continually hammered the point that Zinna and the board did not notify the planning board or receive site plan approval for the aborted complex and chants of "That's illegal" were heard in the auditorium.

The other charge, also hammered repeatedly by the CCB at every board meeting since July 9, is that ordinances can not be amended by resolution — only by other ordinances. Thus, claims the CCB, the \$10-million bond ordinance which was to finance the complex could only have been amended to \$5 million by another ordinance — not a resolution, as the board did on July 9.

In other board matters, Commissioner of Public Safety Ralph DiRuggiero said the 7-acre reservoir area in the center of town off

Joralemon Street should be designated as "conservation area" so that it "remains green for Belleville." Another round of applause, rare these days for a commissioner to receive — was given at this remark.

The question over the land, which is owned by Newark's Water Commission, centers around the possibility that Newark might sell the land to developers. CCB Secretary Cornelius Vander Zwan along with Belleville Frank Jablonski both expressed concern that the land might be subject someday to low-income housing development, especially if all other developable land is turned into condominiums. DiRuggiero's idea of designating it a "conservation area" subject to planning board approval — was met enthusiastically by most in attendance.

In another issue, a citizen complained about the playground area of School 2, which was demolished to make way for the condo

way. The citizen said she had uncovered handwritten documents from "the 1800's," which spec-

ifically decided that land to the children of Belleville for purposes of recreation.

She said that although the school could have been sold, the adjacent playground area specifically could not. She added that if the township made such a healthy profit on the sale of the land, why are township services so poor?

Gabriel Nazzola, vice president of The Concerned Citizens group, brought up an issue at the town meet which was brought up many times before. This time, however, Commissioner DiRuggiero was spotted nodding in agreement.

"Mr. Mayor, don't you think there ought to be figures on resolutions authorizing payment?" the group vice president said.

Nazzola added that "In the interest of the people, this would save time and be more informative."

When prices are omitted from the agendas where resolution titles appear, the end result is usually a lot of time spent checking figures and answering questions.

Nazzola also renewed his call for a permanent salaried engineer, his firm fueled by the most recent fees paid to engineer Neil Sciallano. Nazzola claims that with the fees paid to Sciallano, a Belleville Engineering department could be maintained.

"Let's stop this gravy train that we've been running here for the last few years," Nazzola said to healthy citizen applause.

The next meeting of the Board of Commissioners is scheduled for September 23, 1986, at 8 p.m. Refer to Belleville Briefly in next week's Belleville Times for confirmation of meeting location.

## DENTALLY SPEAKING

By Drs. James D. Muglia and Paul N. De Maio

Miss R. of Newark asks: "My teeth have no cavities but are grayish brown and I don't like the way they look. Is there any kind of cosmetic paint that can be put on?"

At present Miss R., the only cosmetic coverings are either crowns (caps) or bondings. Since you mentioned you have no decay, we would suggest porcelain veneers as a possible solution. Porcelain veneers are fingerlike caps made of a porcelain color shell of your choice that goes on the front side surface of your teeth. Very little removal of tooth structure is needed. After the laboratory makes the covering under the direction of your dentist they are then fitted to your teeth. Upon your approval a special bonding procedure then adheres them to your teeth and the cosmetics you desired are achieved. Some care must be taken to keep the bond intact but it's minimal. Consult your dentist for further information and have a great summer.

Send Inquiries To:  
Dentally Speaking  
671 Franklin Avenue  
Nutley, N.J. 07110  
667-4421

## Essex Plans Senior Festival

Thousands of senior citizens are expected to attend the Essex County Senior Citizens Cultural Festival and Jobs Fair on Thursday, Sept. 11 at the South Mountain Arena in West Orange.

The seventh annual event, the largest of its kind in New Jersey, offers diverse entertainment and activities, both indoors and out. Included in the day's events are three stages of entertainment, food concessions, a craft show, flea market, health screening, an antique show and 50 booths offering information on various services available to seniors.

A special feature of the festival is a Jobs Fair designed to introduce older adults to possible employment opportunities. Representatives of area corporations and businesses will be on hand to discuss possible job openings available to seniors.

The festival begins at 10 a.m. and continues until 3 p.m. Essex County's Turtle Back Zoo, which adjoins the South Mountain Arena, will offer free admission to anyone who visits the cultural festival.

Our senior citizens cultural festival is informative, exciting

and fun. It gets better every year and we hope this year's festival will be the best ever." County Executive Peter Shapiro, who will open the day's festivities, said.

The cultural festival gives older adults the chance to show and celebrate their talents and achievements," he added.

The Jobs Fair is an integral part of today's senior citizens festival. Claudia Fogel, coordinator of the Jobs Fair, said:

Older adults who have given so much of themselves throughout

their lives do not suddenly stop being productive at the magic age of 62 or 65. They can continue to help us with their invaluable service and knowledge if we give them a small helping hand.

The cultural festival is co-sponsored by the Essex County Department of Parks, Recreation and Cultural Affairs and the Essex County Division of Aging. The Jobs Fair is co-sponsored by the Jewish Vocational Service of Metropolitan New Jersey, WNBC-TV and Essex County.

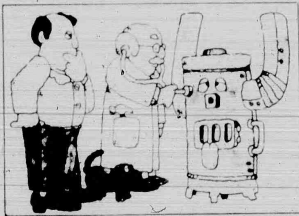
## Medical Imaging, P.A.

is pleased to announce the opening of its new Imaging Center specializing in:

Magnetic Resonance Imaging (MRI)  
X Ray Fluorscopy  
Mammography  
Cardiac Carotid Body Ultrasound

69 Orient Way (201) 933-5712  
Rutherford, New Jersey 07070 (201) 933-0310

## IS YOUR BOILER SICK ?



Plumbing & Heating  
Boilers • Water Heaters  
Burners • Baseboard

WEIL-McLAIN  
High Efficiency

For Prompt Service Call  
**PAR ENERGY**

9-11 Anthony St. Newark, N.J. 07107

485-6404

Residential • Commercial • Industrial

100% Financing

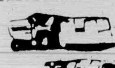
E-Z Credit Terms



SQUARE FOOTAGE	QUARTERLY INSTALLMENT	TOTAL ANNUAL COST
3000	\$ 36.00	144.00
4000	\$ 48.00	192.00
5000	\$ 60.00	240.00
6000	\$ 72.00	288.00
7000	\$ 84.00	336.00

LONGER LAWN PRICED PROPORTIONATELY

ALL PRICES PLUS SALES TAX



LAWN GONE?

Time to Call...



Free Estimates

All lawn care and maintenance services are available. Some chemicals work better when applied in a granular form and others, like weed control and post-emergent crab grass control, work best in liquid form. All lawn care services require periodic maintenance and keep only Lawn King gives all these via Lawn King maintenance spray, and still at less than 16 per square foot per visit.

Of Livingston & West Orange

994-2255 / 743-1025

with this coupon

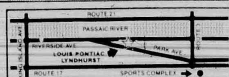
**\$10.00 OFF or 5%**

On Your First Year's Service (Minimum 3,000 sq. ft.)

Limit one coupon per customer

Coupon valid with the customer's only

## LOUIS PONTIAC IN LYNDHURST



939-6100



### USED CAR PRICES SLASHED!

82 ZEPHYR Mustang 4 dr. 5 speed Power 2 dr. 4 cyl. eng. air, abs, 100,000 mi. \$17,400.00 \$13,895	85 GRAND PRIX Mustang 2 dr. 4 cyl. eng. air, abs, 100,000 mi. \$18,495	83 CENTURY Mustang 4 dr. 5 speed Power 2 dr. 4 cyl. eng. air, abs, 100,000 mi. \$16,995	82 FLOORBOARD Mustang 2 dr. 4 cyl. eng. air, abs, 100,000 mi. \$17,400.00 \$10,595
82 CUTLASS Mustang 4 dr. 5 speed Power 2 dr. 4 cyl. eng. air, abs, 100,000 mi. \$17,400.00 \$5,595	81 GRANADA Mustang 2 dr. 4 cyl. eng. air, abs, 100,000 mi. \$17,400.00 \$3,595		

**2.9% APR**

FINANCING CASH BACK  
SELECTED '86 MODELS QUALIFIED

YOUR LOCAL PONTIAC DEALER  
FOR BIGGER SAVINGS!  
PARK AND RIVERSIDE AVE., LYNDHURST  
HOURS: MON-FRI 9-9, WED TH 6 SAT 1-5

**NEW '86 FIERO SE**  
Pontiac Stand alone incl. 4 cyl. eng. 4 spd. man. trans. power steering, abs, air cond. am/fm stereo, luge car. rier. 5th. No 8175 LIST \$12,456  
LESS REBATE \$500  
**\$11,900**





## DIAL-A-SERVICE

## 2945 ALARMS

**LOCK & GLASS**  
Custom Picture & Mirror  
Framing  
Storm Doors & Windows  
New & Repaired  
Tub & Shower enclosures  
Custom mirrored walls  
Locks installed, repaired  
rekeyed  
Wood doors installed  
Leaded Glass repaired  
Keys made, duplicate keys  
All types of window glass  
installed  
Sliding glass doors  
Sliding mirror doors  
Awnings  
BUREAU ALARMS  
285 Hoover Ave.  
Belleville 645-4274

## 2949 APPLIANCE REPAIRS

**SEWING MACHINE**  
REPAIRS  
ALL MAKES  
HOME SERVICE  
FREE ESTIMATES  
10 YEARS EXPERIENCE  
991-2260

**WE REPAIR**  
• Washers • Dryers  
• Refrigerators  
• Stoves  
• Air Conditioning  
Commercial & Central  
AIR CONDITIONING  
SERVICE 967-9278

## LAWN MOWER REPAIRS

**SUNBEAM**  
Specialists  
Parts & Service  
Call 748-8919

## 2908 CARPET FURNITURE &amp; DRAPERY CLEANING

**FLYNN'S CARPET**  
• Service  
Cleaning, Installation, Repairs  
2 rooms cleaned \$32.00  
3 rooms cleaned \$45.00  
Call for Estimate  
991-4185

## FULL STEAM AHEAD!

Hydraulic Steam Clean  
by professional technicians  
• No toxic fumes • No  
future safety-free clean  
American  
Carpet Care  
322-1390

## 29211 CLEANING SERVICES

**A POLISH TOUCH**  
HOUSE CLEANING  
SERVICE  
• We Wash Walls  
• Bathrooms  
• Vacuums • Dust  
• Free Estimates  
CALL 968-0425

A cleaning service can  
change your life & make  
things much easier.  
Just try us 1 time & you  
will want us again.

## 2913 CONSTRUCTION

**J CAPANEER**  
GENERAL  
CONTRACTOR

**NEW HOMES**  
AND  
AFFORDABLE  
MODULAR HOMES  
WE DO AND SELL  
OUR OWN WORK  
NO MIDDLEMAN  
CALL 483-2793

## 2907 DRIVEWAYS

**ASPHALT**  
PAVING  
DRIVEWAYS  
PARKING LOTS  
CONCRETE WALKS  
STEPS  
FREE ESTIMATES  
FULLY INSURED  
FRANK J.  
SCAROLLA, INC.  
991-F-A-R

## KEN'S DRIVEWAY SEALING

Reas. Res. Quality  
Work  
CALL 335-9222  
Weekdays after 4 p.m.  
Anytime Sat. or Sun.  
7:30-7

## 2903 ELECTRICIANS

**DE LIZZO ELECTRICAL**  
CONTRACTING, INC.  
Industrial • Commercial  
Residential  
No job too small or too far.  
FREE ESTIMATES  
CALL 661-2077  
License No. 4801

## VALERA ELECTRIC

Commercial  
Industrial  
24 Hour Emergency  
Lic. No. 7660  
Call 279-4070

## JOE SERVIDIO

Electrical Contractor  
Industrial • Commercial  
Residential  
Wiring  
N.J. Lic. No. 4317  
Bonded & Insured

## MICHAEL BARILETTANO

ELECTRICIAN  
CONTRACTOR  
• Reasonable Rates  
• Commercial • Residential  
• Insured & Bonded  
Lic. No. 7096  
• Free Estimates  
Call 667-0773

## 2913 FENCES

**V & G CO.**  
Vinyl Fencing  
• Walks • Patios  
• Flower Beds  
All Types of Fences  
Complete Installation  
Free Estimates  
Belleville  
Call Anytime  
751-9356

## 2965 GUTTERS

**GUTTERS**  
LEADERS  
thoroughly  
flushed  
INSURED  
(\$30-\$50)  
Minor Tree Trimming  
Clip 'n Save  
Ned Stevens  
226-7379  
7 Days a Week, Rain or Shine

## GUTTERS

AND LEADERS  
CLEANED, REPAIRED  
OR REPLACED WITH  
VINYL GALVANIZED  
SEAMLESS ALUMINUM  
OR BROWN ALUMINUM  
• NO JOBS TOO SMALL  
• SIDING REPAIRS  
CALL AL ROBERTS  
751-9356

## ANYTIME EYES &amp; WEEKENDS

• ANYTIME EYES  
& WEEKENDS  
CALL 991-4185

## 2945 HANDYMAN

**HANDYMAN**  
• PAINTING  
• CLEAN GUTTERS  
• SEAL DRIVEWAYS  
• NO JOBS TOO SMALL  
ANYTIME  
759-0724

## HANDYMAN

• PAINTING  
• CLEAN GUTTERS  
• SEAL DRIVEWAYS  
• NO JOBS TOO SMALL  
ANYTIME  
759-0724

## 2913 CONSTRUCTION

**J CAPANEER**  
GENERAL  
CONTRACTOR

## 2907 DRIVEWAYS

**ASPHALT**  
PAVING  
DRIVEWAYS  
PARKING LOTS  
CONCRETE WALKS  
STEPS  
FREE ESTIMATES  
FULLY INSURED  
FRANK J.  
SCAROLLA, INC.  
991-F-A-R

## 2907 DRIVEWAYS

**ASPHALT**  
PAVING  
DRIVEWAYS  
PARKING LOTS  
CONCRETE WALKS  
STEPS  
FREE ESTIMATES  
FULLY INSURED  
FRANK J.  
SCAROLLA, INC.  
991-F-A-R

## 2907 DRIVEWAYS

**ASPHALT**  
PAVING  
DRIVEWAYS  
PARKING LOTS  
CONCRETE WALKS  
STEPS  
FREE ESTIMATES  
FULLY INSURED  
FRANK J.  
SCAROLLA, INC.  
991-F-A-R

## 2907 DRIVEWAYS

**ASPHALT**  
PAVING  
DRIVEWAYS  
PARKING LOTS  
CONCRETE WALKS  
STEPS  
FREE ESTIMATES  
FULLY INSURED  
FRANK J.  
SCAROLLA, INC.  
991-F-A-R

## 2907 DRIVEWAYS

**ASPHALT**  
PAVING  
DRIVEWAYS  
PARKING LOTS  
CONCRETE WALKS  
STEPS  
FREE ESTIMATES  
FULLY INSURED  
FRANK J.  
SCAROLLA, INC.  
991-F-A-R

## 2907 DRIVEWAYS

**ASPHALT**  
PAVING  
DRIVEWAYS  
PARKING LOTS  
CONCRETE WALKS  
STEPS  
FREE ESTIMATES  
FULLY INSURED  
FRANK J.  
SCAROLLA, INC.  
991-F-A-R

## 2907 HOME IMPROVEMENT

**OVERHEAD**  
GARAGE DOORS  
• Replaced • Installed  
• Serviced  
ELECTRIC  
DOOR OPENERS  
• Sales • Installations  
McDANIEL  
ENTREPRISES  
667-4976

## D &amp; F

GENERAL  
CONTRACTORS  
• Custom Remodeling  
• Alterations/Repairs  
• Carpentry • Plastering  
• Sheet Rock & Tile  
• Bathrooms  
• Kitchens  
• Fully Ins. for  
Essex County Grants  
751-4882  
BELLEVILLE

## PICTURE PERFECT

INTERIOR EXTERIOR  
DESIGNS  
• Painting • Plastering  
• Carpentry • Roofing  
• Doors • Siding  
• Basements  
• Windows  
• Remodeled  
Call Monday to Saturday  
8 a.m. to 8 p.m.  
Fully Ins. Free Est.  
414-1895

## 2907 HOME IMPROVEMENT

**30 YRS. EXP.**  
ARCHITECTURAL  
DESIGNS  
ELECTRICAL  
H.C. ROADS  
• Remodeled  
• Enclosures  
• Roofing  
• Windows & Door  
REPLACEMENT  
For free estimate  
• HARLIE  
759-4117

## 2913 FENCES

**V & G CO.**  
Vinyl Fencing  
• Walks • Patios  
• Flower Beds  
All Types of Fences  
Complete Installation  
Free Estimates  
Belleville  
Call Anytime  
751-9356

## 2965 GUTTERS

**GUTTERS**  
LEADERS  
thoroughly  
flushed  
INSURED  
(\$30-\$50)  
Minor Tree Trimming  
Clip 'n Save  
Ned Stevens  
226-7379  
7 Days a Week, Rain or Shine

## GUTTERS

AND LEADERS  
CLEANED, REPAIRED  
OR REPLACED WITH  
VINYL GALVANIZED  
SEAMLESS ALUMINUM  
OR BROWN ALUMINUM  
• NO JOBS TOO SMALL  
• SIDING REPAIRS  
CALL AL ROBERTS  
751-9356

## ANYTIME EYES &amp; WEEKENDS

• ANYTIME EYES  
& WEEKENDS  
CALL 991-4185

## 2945 HANDYMAN

**HANDYMAN**  
• PAINTING  
• CLEAN GUTTERS  
• SEAL DRIVEWAYS  
• NO JOBS TOO SMALL  
ANYTIME  
759-0724

## HANDYMAN

• PAINTING  
• CLEAN GUTTERS  
• SEAL DRIVEWAYS  
• NO JOBS TOO SMALL  
ANYTIME  
759-0724

## 2913 CONSTRUCTION

**J CAPANEER**  
GENERAL  
CONTRACTOR

## 2907 DRIVEWAYS

**ASPHALT**  
PAVING  
DRIVEWAYS  
PARKING LOTS  
CONCRETE WALKS  
STEPS  
FREE ESTIMATES  
FULLY INSURED  
FRANK J.  
SCAROLLA, INC.  
991-F-A-R

## 2907 DRIVEWAYS

**ASPHALT**  
PAVING  
DRIVEWAYS  
PARKING LOTS  
CONCRETE WALKS  
STEPS  
FREE ESTIMATES  
FULLY INSURED  
FRANK J.  
SCAROLLA, INC.  
991-F-A-R

## 2907 DRIVEWAYS

**ASPHALT**  
PAVING  
DRIVEWAYS  
PARKING LOTS  
CONCRETE WALKS  
STEPS  
FREE ESTIMATES  
FULLY INSURED  
FRANK J.  
SCAROLLA, INC.  
991-F-A-R

## 2907 DRIVEWAYS

**ASPHALT**  
PAVING  
DRIVEWAYS  
PARKING LOTS  
CONCRETE WALKS  
STEPS  
FREE ESTIMATES  
FULLY INSURED  
FRANK J.  
SCAROLLA, INC.  
991-F-A-R

## 2907 DRIVEWAYS

**ASPHALT**  
PAVING  
DRIVEWAYS  
PARKING LOTS  
CONCRETE WALKS  
STEPS  
FREE ESTIMATES  
FULLY INSURED  
FRANK J.  
SCAROLLA, INC.  
991-F-A-R

## 2907 DRIVEWAYS

**ASPHALT**  
PAVING  
DRIVEWAYS  
PARKING LOTS  
CONCRETE WALKS  
STEPS  
FREE ESTIMATES  
FULLY INSURED  
FRANK J.  
SCAROLLA, INC.  
991-F-A-R

## 2903 JUNK DEALER

**BRING IT IN!**  
Copper, Brass, Aluminum, Lead  
Belleville, Mo. 63101  
KEARNEY SCRAP METAL  
4750 Shaw Ave. Kansas  
TOP PRICES 991-0423  
7:00-7:00

## 2915 LANDSCAPING

**FALL IS THE TIME FOR PLANTING**  
• JOBS • CONSIDERING  
• Sod, shrubs, cleanups  
reasonable rates  
Call 235-1526

## JUST LAWS

MOWING, WEED  
PULLING, GRASS  
TRIMMING, ETC.  
Almost as cheap as doing  
it yourself  
667-0902

## K - H - P

LANDSCAPING  
Commercial/Residential  
• Lawn Maintenance  
• Spring Trimming  
• Brush Clean Up  
• Shrub Installation  
Free estimate  
Reasonable rates  
667-9130

## G. BASILE &amp; SON

Landscaping Contractors  
• Landscaping  
• Gardening  
• Fencing  
• Railroad Ties  
667-8943

## CAPALBO &amp; SON

LANDSCAPING  
• Complete Lawn  
Maintenance Service  
Free Estimates  
Reasonable Rates  
• Bush Trimming  
• Spring Clean Up  
• Railroad Ties • Sod  
Call 284-0359

## 2919 LIMO SERVICE

**STARLITE**  
LIMOUSINE SERVICE  
Specializing in:  
• Corporate Accounts  
• Limousines  
• Weddings  
• Airports • Proms  
• All Occasions  
63 Super Street  
Lic. discount wad  
660-0673 Belleville

## VIGILANTE

LIMOUSINE SERVICE  
LET US DRIVE YOU  
THERE IN OUR LATE  
MODEL STRETCH  
LIMOUSINE  
661-3440

## ANOTHER LIMO INC.

Travel and more  
24 hour service  
• Sedan and stretch limos  
• To all major airports  
• A.C. N.Y.C. Pier  
• 10% off with ad  
748-1549

## 2910 LOCK &amp; GLASS

**BEN'S LOCK & GLASS**  
NUTLEY  
661-3857  
Free Estimate

## 2910 LOCK &amp; GLASS

**BEN'S LOCK & GLASS**  
NUTLEY  
661-3857  
Free Estimate

## 2910 LOCK &amp; GLASS

**BEN'S LOCK & GLASS**  
NUTLEY  
661-3857  
Free Estimate

## 2910 LOCK &amp; GLASS

**BEN'S LOCK & GLASS**  
NUTLEY  
661-3857  
Free Estimate

## 2910 LOCK &amp; GLASS

**BEN'S LOCK & GLASS**  
NUTLEY  
661-3857  
Free Estimate

## 2910 LOCK &amp; GLASS

**BEN'S LOCK & GLASS**  
NUTLEY  
661-3857  
Free Estimate

## 2910 LOCK &amp; GLASS

**BEN'S LOCK & GLASS**  
NUTLEY  
661-3857  
Free Estimate

## 2910 LOCK &amp; GLASS

**BEN'S LOCK & GLASS**  
NUTLEY  
661-3857  
Free Estimate

## 2905 MASONRY

**F. CURTO**  
MASON  
CONTRACTOR  
• Sidelwalks  
• Driveways  
• Patios  
• Brick Work  
FREE ESTIMATES  
Call after 5:00  
966-5652/750-8489

## MARIO RIZZI &amp; CO.

ASPHALT & CONCRETE  
• Driveways • Sidewalks  
• Patios • Patching  
• Concrete curbs, railroad  
ties, sod top soil work  
Call 781-8893 after 5 p.m.

## 2909 MOVING &amp; STORAGE

**PALL'S**  
MOVING &  
STORAGE  
Local & Long Distance  
Parking & Light  
Duties  
License PM0067  
LOW RATES  
675-6440

## ALL SEASON MOVERS, INC.

• FREE  
ESTIMATES  
• FULLY  
INSURED  
LOCAL & LONG  
DISTANCE  
MOVING  
OVER TEN  
YEARS IN  
THE BUSINESS  
997-8034  
OR 991-6065  
Lic. No. 1300416

## NUTLEY LOCAL MOVER

**MOVE ANYTHING ONE**  
PIECE OR FULL  
LOAD FOR FREE  
ESTIMATE  
Call 478-8685

## KILKENNY MOVING VAN

**MOVING VAN**  
• 10' • 12' • 14' • 16' • 18' • 20'  
• 24' • 26' • 28' • 30' • 32' • 34' • 36' • 38' • 40'  
• 42' • 44' • 46' • 48' • 50' • 52' • 54' • 56' • 58' • 60'  
• 62' • 64' • 66' • 68' • 70' • 72' • 74' • 76' • 78' • 80'  
• 82' • 84' • 86' • 88' • 90' • 92' • 94' • 96' • 98' • 100'  
• 102' • 104' • 106' • 108' • 110' • 112' • 114' • 116' • 118' • 120'  
• 122' • 124' • 126' • 128' • 130' • 132' • 134' • 136' • 138' • 140'  
• 142' • 144' • 146' • 148' • 150' • 152' • 154' • 156' • 158' • 160'  
• 162' • 164' • 166' • 168' • 170' • 172' • 174' • 176' • 178' • 180'  
• 182' • 184' • 186' • 188' • 190' • 192' • 194' • 196' • 198' • 200'  
• 202' • 204' • 206' • 208' • 210' • 212' • 214' • 216' • 218' • 220'  
• 222' • 224' • 226' • 228' • 230' • 232' • 234' • 236' • 238' • 240'  
• 242' • 244' • 246' • 248' • 250' • 252' • 254' • 256' • 258' • 260'  
• 262' • 264' • 266' • 268' • 270' • 272' • 274' • 276' • 278' • 280'  
• 282' • 284' • 286' • 288' • 290' • 292' • 294' • 296' • 298' • 300'  
• 302' • 304' • 306' • 308' • 310' • 312' • 314' • 316' • 318' • 320'  
• 322' • 324' • 326' • 328' • 330' • 332' • 334' • 336' • 338' • 340'  
• 342' • 344' • 346' • 348' • 350' • 352' • 354' • 356' • 358' • 360'  
• 362' • 364' • 366' • 368' • 370' • 372' • 374' • 376' • 378' • 380'  
• 382' • 384' • 386' • 388' • 390' • 392' • 394' • 396' • 398' • 400'  
• 402' • 404' • 406' • 408' • 410' • 412' • 414' • 416' • 418' • 420'  
• 422' • 424' • 426' • 428' • 430' • 432' • 434' • 436' • 438' • 440'  
• 442' • 444' • 446' • 448' • 450' • 452' • 454' • 456' • 458' • 460'  
• 462' • 464' • 466' • 468' • 470' • 472' • 474' • 476' • 478' • 480'  
• 482' • 484' • 486' • 488' • 490' • 492' • 494' • 496' • 498' • 500'  
• 502' • 504' • 506' • 508' • 510' • 512' • 514' • 516' • 518' • 520'  
• 522' • 524' • 526' • 528' • 530' • 532' • 534' • 536' • 538' • 540'  
• 542' • 544' • 546' • 548' • 550' • 552' • 554' • 556' • 558' • 560'  
• 562' • 564' • 566' • 568' • 570' • 572' • 574' • 576' • 578' • 580'  
• 582' • 584' • 586' • 588' • 590' • 592' • 594' • 596' • 598' • 600'  
• 602' • 604' • 606' • 608' • 610' • 612' • 614' • 616' • 618' • 620'  
• 622' • 624' • 626' • 628' • 630' • 632' • 634' • 636' • 638' • 640'  
• 642' • 644' • 646' • 648' • 650' • 652' • 654' • 656' • 658' • 660'  
• 662' • 664' • 666' • 668' • 670' • 672' • 674' • 676' • 678' • 680'  
• 682' • 684' • 686' • 688' • 690' • 692' • 694' • 696' • 698' • 700'  
• 702' • 704' • 706' • 708' • 710' • 712' • 714' • 716' • 718' • 720'  
• 722' • 724' • 726' • 728' • 730' • 732' • 734' • 736' • 738' • 740'  
• 742' • 744' • 746' • 748' • 750' • 752' • 754' • 756' • 758' • 760'  
• 762' • 764' • 766' • 768' • 770' • 772' • 774' • 776' • 778' • 780'  
• 782' • 784' • 786' • 788' • 790' • 792' • 794' • 796' • 798' • 800'  
• 802' • 804' • 806' • 808' • 810' • 812' • 814' • 816' • 818' • 820'  
• 822' • 824' • 826' • 828' • 830' • 832' • 834' • 836' • 838' • 840'  
• 842' • 844' • 846' • 848' • 850' • 852' • 854' • 856' • 858' • 860'  
• 862' • 864' • 866' • 868' • 870' • 872' • 874' • 876' • 878' • 880'  
• 882' • 884' • 886' • 888' • 890' • 892' • 894' • 896' • 898' • 900'  
• 902' • 904' • 906' • 908' • 910' • 912' • 914' • 916' • 918' • 920'  
• 922' • 924' • 926' • 928' • 930' • 932' • 934' • 936' • 938' • 940'  
• 942' • 944' • 946' • 948' • 950' • 952' • 954' • 956' • 958' • 960'  
• 962' • 964' • 966' • 968' • 970' • 972' • 974' • 976' • 978' • 980'  
• 982' • 984' • 986' • 988' • 990' • 992' • 994' • 996' • 998' • 1000'  
• 1002' • 1004' • 1006' • 1008' • 1010' • 1012' • 1014' • 1016' • 1018' • 1020'  
• 1022' • 1024' • 1026' • 1028' • 1030' • 1032' • 1034' • 1036' • 1038' • 1040'  
• 1042' • 1044' • 1046' • 1048' • 1050' • 1052' • 1054' • 1056' • 1058' • 1060'  
• 1062' • 1064' • 1066' • 1068' • 1070' • 1072' • 1074' • 1076' • 1078' • 1080'  
• 1082' • 1084' • 1086' • 1088' • 1090' • 1092' • 1094' • 1096' • 1098' • 1100'

3155 SALES 3155 SALES

**RETAIL**  
The Opportunity You've Been Waiting For is Waiting  
For You At Hahne's  
Hahne's has great sales opportunities available for aggressive individuals eager for a position that can launch a promising career. Ongoing training and support.

**SALES**  
Full Time  
Part Time 11am-3pm  
Saturdays Only

Part of what makes Hahne's a frontrunner in the retail industry is our ability to attract and reward dynamic people who are ready to begin the momentum of an exciting career in retailing. Come to us about our competitive salaries, benefits that include a storewide shopping discount and the chance to become an integral part of one of New Jersey's major department stores.

Apply to our Personnel Office Monday-Friday 10am-12noon or 1pm-4pm.

**hahne's**  
a new jersey tradition

609 Broad St. Newark, NJ  
equal opportunity employer M.F.

COSMETICS SALES

Let hahne's Change The Complexion Of Your Career!  
We seek experienced saleswomen to sell professional cosmetics to women in the area of cosmetics.

REVENUE

**MONTELL**  
Full Time  
**LAUDER**  
Part Time 11am-4pm

If you've had previous retail experience, background, come see how professional it can be to work in retailing cosmetics. We offer a full-time career opportunity for individuals who are knowledgeable about cosmetics products and makeup application. Attractive salaries, bonus benefits, and flexible shopping discounts. Apply to: Montell, Monday-Friday 10am-12noon or 1pm-4pm.

**hahne's**  
a new jersey tradition

609 Broad St. Newark, NJ  
equal opportunity employer M.F.

3155 PART-TIME HELP

Pre-School Teachers Assistant Pleasant efficient woman with 10 years experience. Call 759-1211 667-3538

PART-TIME DRIVERS AND/OR SCHOOL VEHICLE AIDES

Excellent opportunity for retired & school leavers to supplement your income driving or supervising school children in our cars or station wagons. Good working conditions. Top salary. Applicants must be of good character and experienced drivers. 25 yrs. of age with a good driving record.

998-4800

CLERK-CLERK PART-TIME

Willing to learn 14000 bkg. machine skill open call 315-315

OFFICE CLEANING

Part time 1 or 2 days per week 751-1296

Excellent Income for Part Time Home Assembly

Call 741-8400 Ext. 831

Phone Appointment

3 immediate openings 3-30-30 Mon. Thurs. Sat. 9:00-10:00. Call to McDonald's in Bld. Call Hahne's 741-8400 Ext. 831

MATURE MINDED PART-TIME RECEPTIONIST

Call 741-8400 Ext. 831

Part Time Student

Call 741-8400 Ext. 831

GALILEO FRAMES, P.T.

Call 741-8400 Ext. 831

P.T. work on home

Call 741-8400 Ext. 831

3156 PROFESSIONAL

Assistant Director Needed in work activity program with retarded adults. Specifications B.A. in special ed or related field. Experience with retarded adults. Male preferred. Hours 9:00am-3:00pm. Call Anne Rotonda 331-4000 or 331-4001

3155 SALES

**A DEBT FREE CHRISTMAS**  
Earn extra money. Choose your own hours. Work from home. Demonstrate toys & gifts. Free \$300 sample kit. No collecting, no delivering. Call Ginny 961-1524. Ext. 853-4888 or Carol 304-1064

AUDIO SALES

\$500 thru \$1,000 per week. National co. just opening in Northern Jersey is seeking 18 to 20 salesmen to sell stereo equip. Co. vehicle bonuses & much more. No exp. nec. Will train. Must be able to start immediately. For personal interview call Bob 201-887-6389 9AM to 4PM only

WANTED USED AIR CONDITIONERS CASH

Call 442-3681

SEWING MACHINE

Call 442-3681

100 SUNBATHS

Call 442-3681

37411 ARTICLES WANTED

Call 442-3681

LIONEL AND OTHER TRAINS

Call 442-3681

37411 ARTICLES WANTED

Call 442-3681

OWN YOUR OWN

Call 442-3681

37411 ARTICLES WANTED

Call 442-3681

37411 ARTICLES WANTED

Call 442-3681

37411 ARTICLES WANTED

Call 442-3681

37411 ARTICLES WANTED

Call 442-3681

37411 ARTICLES WANTED

Call 442-3681

37411 ARTICLES WANTED

Call 442-3681

37411 ARTICLES WANTED

Call 442-3681

37411 ARTICLES WANTED

Call 442-3681

37411 ARTICLES WANTED

Call 442-3681

37411 ARTICLES WANTED

Call 442-3681

37411 ARTICLES WANTED

Call 442-3681

37411 ARTICLES WANTED

Call 442-3681

37411 ARTICLES WANTED

Call 442-3681

3765 GARAGE SALES

**CONTENTS SALE**  
THURSDAY, SEPTEMBER 11, 8-12  
265 ESSEX AVE. BLOOMFIELD  
(Off Bay Ave. 1 block below Broad St.)  
LR. furn. couch, Baker end tables, chairs, lamps, wall arrangements, hall shelf & mirror, DR table & chairs, 1000's of books, 1000's of records, 1000's of tapes, 1000's of cassettes, 1000's of LP's, 1000's of 45's, 1000's of 7's, 1000's of 10's, 1000's of 12's, 1000's of 15's, 1000's of 20's, 1000's of 25's, 1000's of 30's, 1000's of 35's, 1000's of 40's, 1000's of 45's, 1000's of 50's, 1000's of 55's, 1000's of 60's, 1000's of 65's, 1000's of 70's, 1000's of 75's, 1000's of 80's, 1000's of 85's, 1000's of 90's, 1000's of 95's, 1000's of 100's, 1000's of 105's, 1000's of 110's, 1000's of 115's, 1000's of 120's, 1000's of 125's, 1000's of 130's, 1000's of 135's, 1000's of 140's, 1000's of 145's, 1000's of 150's, 1000's of 155's, 1000's of 160's, 1000's of 165's, 1000's of 170's, 1000's of 175's, 1000's of 180's, 1000's of 185's, 1000's of 190's, 1000's of 195's, 1000's of 200's, 1000's of 205's, 1000's of 210's, 1000's of 215's, 1000's of 220's, 1000's of 225's, 1000's of 230's, 1000's of 235's, 1000's of 240's, 1000's of 245's, 1000's of 250's, 1000's of 255's, 1000's of 260's, 1000's of 265's, 1000's of 270's, 1000's of 275's, 1000's of 280's, 1000's of 285's, 1000's of 290's, 1000's of 295's, 1000's of 300's, 1000's of 305's, 1000's of 310's, 1000's of 315's, 1000's of 320's, 1000's of 325's, 1000's of 330's, 1000's of 335's, 1000's of 340's, 1000's of 345's, 1000's of 350's, 1000's of 355's, 1000's of 360's, 1000's of 365's, 1000's of 370's, 1000's of 375's, 1000's of 380's, 1000's of 385's, 1000's of 390's, 1000's of 395's, 1000's of 400's, 1000's of 405's, 1000's of 410's, 1000's of 415's, 1000's of 420's, 1000's of 425's, 1000's of 430's, 1000's of 435's, 1000's of 440's, 1000's of 445's, 1000's of 450's, 1000's of 455's, 1000's of 460's, 1000's of 465's, 1000's of 470's, 1000's of 475's, 1000's of 480's, 1000's of 485's, 1000's of 490's, 1000's of 495's, 1000's of 500's, 1000's of 505's, 1000's of 510's, 1000's of 515's, 1000's of 520's, 1000's of 525's, 1000's of 530's, 1000's of 535's, 1000's of 540's, 1000's of 545's, 1000's of 550's, 1000's of 555's, 1000's of 560's, 1000's of 565's, 1000's of 570's, 1000's of 575's, 1000's of 580's, 1000's of 585's, 1000's of 590's, 1000's of 595's, 1000's of 600's, 1000's of 605's, 1000's of 610's, 1000's of 615's, 1000's of 620's, 1000's of 625's, 1000's of 630's, 1000's of 635's, 1000's of 640's, 1000's of 645's, 1000's of 650's, 1000's of 655's, 1000's of 660's, 1000's of 665's, 1000's of 670's, 1000's of 675's, 1000's of 680's, 1000's of 685's, 1000's of 690's, 1000's of 695's, 1000's of 700's, 1000's of 705's, 1000's of 710's, 1000's of 715's, 1000's of 720's, 1000's of 725's, 1000's of 730's, 1000's of 735's, 1000's of 740's, 1000's of 745's, 1000's of 750's, 1000's of 755's, 1000's of 760's, 1000's of 765's, 1000's of 770's, 1000's of 775's, 1000's of 780's, 1000's of 785's, 1000's of 790's, 1000's of 795's, 1000's of 800's, 1000's of 805's, 1000's of 810's, 1000's of 815's, 1000's of 820's, 1000's of 825's, 1000's of 830's, 1000's of 835's, 1000's of 840's, 1000's of 845's, 1000's of 850's, 1000's of 855's, 1000's of 860's, 1000's of 865's, 1000's of 870's, 1000's of 875's, 1000's of 880's, 1000's of 885's, 1000's of 890's, 1000's of 895's, 1000's of 900's, 1000's of 905's, 1000's of 910's, 1000's of 915's, 1000's of 920's, 1000's of 925's, 1000's of 930's, 1000's of 935's, 1000's of 940's, 1000's of 945's, 1000's of 950's, 1000's of 955's, 1000's of 960's, 1000's of 965's, 1000's of 970's, 1000's of 975's, 1000's of 980's, 1000's of 985's, 1000's of 990's, 1000's of 995's, 1000's of 1000's, 1000's of 1005's, 1000's of 1010's, 1000's of 1015's, 1000's of 1020's, 1000's of 1025's, 1000's of 1030's, 1000's of 1035's, 1000's of 1040's, 1000's of 1045's, 1000's of 1050's, 1000's of 1055's, 1000's of 1060's, 1000's of 1065's, 1000's of 1070's, 1000's of 1075's, 1000's of 1080's, 1000's of 1085's, 1000's of 1090's, 1000's of 1095's, 1000's of 1100's, 1000's of 1105's, 1000's of 1110's, 1000's of 1115's, 1000's of 1120's, 1000's of 1125's, 1000's of 1130's, 1000's of 1135's, 1000's of 1140's, 1000's of 1145's, 1000's of 1150's, 1000's of 1155's, 1000's of 1160's, 1000's of 1165's, 1000's of 1170's, 1000's of 1175's, 1000's of 1180's, 1000's of 1185's, 1000's of 1190's, 1000's of 1195's, 1000's of 1200's, 1000's of 1205's, 1000's of 1210's, 1000's of 1215's, 1000's of 1220's, 1000's of 1225's, 1000's of 1230's, 1000's of 1235's, 1000's of 1240's, 1000's of 1245's, 1000's of 1250's, 1000's of 1255's, 1000's of 1260's, 1000's of 1265's, 1000's of 1270's, 1000's of 1275's, 1000's of 1280's, 1000's of 1285's, 1000's of 1290's, 1000's of 1295's, 1000's of 1300's, 1000's of 1305's, 1000's of 1310's, 1000's of 1315's, 1000's of 1320's, 1000's of 1325's, 1000's of 1330's, 1000's of 1335's, 1000's of 1340's, 1000's of 1345's, 1000's of 1350's, 1000's of 1355's, 1000's of 1360's, 1000's of 1365's, 1000's of 1370's, 1000's of 1375's, 1000's of 1380's, 1000's of 1385's, 1000's of 1390's, 1000's of 1395's, 1000's of 1400's, 1000's of 1405's, 1000's of 1410's, 1000's of 1415's, 1000's of 1420's, 1000's of 1425's, 1000's of 1430's, 1000's of 1435's, 1000's of 1440's, 1000's of 1445's, 1000's of 1450's, 1000's of 1455's, 1000's of 1460's, 1000's of 1465's, 1000's of 1470's, 1000's of 1475's, 1000's of 1480's, 1000's of 1485's, 1000's of 1490's, 1000's of 1495's, 1000's of 1500's, 1000's of 1505's, 1000's of 1510's, 1000's of 1515's, 1000's of 1520's, 1000's of 1525's, 1000's of 1530's, 1000's of 1535's, 1000's of 1540's, 1000's of 1545's, 1000's of 1550's, 1000's of 1555's, 1000's of 1560's, 1000's of 1565's, 1000's of 1570's, 1000's of 1575's, 1000's of 1580's, 1000's of 1585's, 1000's of 1590's, 1000's of 1595's, 1000's of 1600's, 1000's of 1605's, 1000's of 1610's, 1000's of 1615's, 1000's of 1620's, 1000's of 1625's, 1000's of 1630's, 1000's of 1635's, 1000's of 1640's, 1000's of 1645's, 1000's of 1650's, 1000's of 1655's, 1000's of 1660's, 1000's of 1665's, 1000's of 1670's, 1000's of 1675's, 1000's of 1680's, 1000's of 1685's, 1000's of 1690's, 1000's of 1695's, 1000's of 1700's, 1000's of 1705's, 1000's of 1710's, 1000's of 1715's, 1000's of 1720's, 1000's of 1725's, 1000's of 1730's, 1000's of 1735's, 1000's of 1740's, 1000's of 1745's, 1000's of 1750's, 1000's of 1755's, 1000's of 1760's, 1000's of 1765's, 1000's of 1770's, 1000's of 1775's, 1000's of 1780's, 1000's of 1785's, 1000's of 1790's, 1000's of 1795's, 1000's of 1800's, 1000's of 1805's, 1000's of 1810's, 1000's of 1815's, 1000's of 1820's, 1000's of 1825's, 1000's of 1830's, 1000's of 1835's, 1000's of 1840's, 1000's of 1845's, 1000's of 1850's, 1000's of 1855's, 1000's of 1860's, 1000's of 1865's, 1000's of 1870's, 1000's of 1875's, 1000's of 1880's, 1000's of 1885's, 1000's of 1890's, 1000's of 1895's, 1000's of 1900's, 1000's of 1905's, 1000's of 1910's, 1000's of 1915's, 1000's of 1920's, 1000's of 1925's, 1000's of 1930's, 1000's of 1935's, 1000's of 1940's, 1000's of 1945's, 1000's of 1950's, 1000's of 1955's, 1000's of 1960's, 1000's of 1965's, 1000's of 1970's, 1000's of 1975's, 1000's of 1980's, 1000's of 1985's, 1000's of 1990's, 1000's of 1995's, 1000's of 2000's, 1000's of 2005's, 1000's of 2010's, 1000's of 2015's, 1000's of 2020's, 1000's of 2025's, 1000's of 2030's, 1000's of 2035's, 1000's of 2040's, 1000's of 2045's, 1000's of 2050's, 1000's of 2055's, 1000's of 2060's, 1000's of 2065's, 1000's of 2070's, 1000's of 2075's, 1000's of 2080's, 1000's of 2085's, 1000's of 2090's, 1000's of 2095's, 1000's of 2100's, 1000's of 2105's, 1000's of 2110's, 1000's of 2115's, 1000's of 2120's, 1000's of 2125's, 1000's of 2130's, 1000's of 2135's, 1000's of 2140's, 1000's of 2145's, 1000's of 2150's, 1000's of 2155's, 1000's of 2160's, 1000's of 2165's, 1000's of 2170's, 1000's of 2175's, 1000's of 2180's, 1000's of 2185's, 1000's of 2190's, 1000's of 2195's, 1000's of 2200's, 1000's of 2205's, 1000's of 2210's, 1000's of 2215's, 1000's of 2220's, 1000's of 2225's, 1000's of 2230's, 1000's of 2235's, 1000's of 2240's, 1000's of 2245's, 1000's of 2250's, 1000's of 2255's, 1000's of 2260's, 1000's of 2265's, 1000's of 2270's, 1000's of 2275's, 1000's of 2280's, 1000's of 2285's, 1000's of 2290's, 1000's of 2295's, 1000's of 2300's, 1000's of 2305's, 1000's of 2310's, 1000's of 2315's, 1000's of 2320's, 1000's of 2325's, 1000's of 2330's, 1000's of 2335's, 1000's of 2340's, 1000's of 2345's, 1000's of 2350's, 1000's of 2355's, 1000's of 2360's, 1000's of 2365's, 1000's of 2370's, 1000's of 2375's, 1000's of 2380's, 1000's of 2385's, 1000's of 2390's, 1000's of 2395's, 1000's of 2400's, 1000's of 2405's, 1000's of 2410's, 1000's of 2415's, 1000's of 2420's, 1000's of 2425's, 1000's of 2430's, 1000's of 2435's, 1000's of 2440's, 1000's of 2445's, 1000's of 2450's, 1000's of 2455's, 1000's of 2460's, 1000's of 2465's, 1000's of 2470's, 1000's of 2475's, 1000's of 2480's, 1000's of 2485's, 1000's of 2490's, 1000's of 2495's, 1000's of 2500's, 1000's of 2505's, 1000's of 2510's, 1000's of 2515's, 1000's of 2520's, 1000's of 2525's, 1000's of 2530's, 1000's of 2535's, 1000's of 2540's, 1000's of 2545's, 1000's of 2550's, 1000's of 2555's, 1000's of 2560's, 1000's of 2565's, 1000's of 2570's, 1000's of 2575's, 1000's of 2580's, 1000's of 2585's, 1000's of 2590's, 1000's of 2595's, 1000's of 2600's, 1000's of 2605's, 1000's of 2610's, 1000's of 2615's, 1000's of 2620's, 1000's of 2625's, 1000's of 2630's, 1000's of 2635's, 1000's of 2640's, 1000's of 2645's, 1000's of 2650's, 1000's of 2655's, 1000's of 2660's, 1000's of 2665's, 1000's of 2670's, 1000's of 2675's, 1000's of 2680's, 1000's of 2685's, 1000's of 2690's, 1000's of 2695's, 1000's of 2700's, 1000's of 2705's, 1000's of 2710's, 1000's of 2715's, 1000's of 2720's, 1000's of 2725's, 1000's of 2730's, 1000's of 2735's, 1000's of 2740's, 1000's of 2745's, 1000's of 2750's, 1000's of 2755's, 1000's of 2760's, 1000's of 2765's, 1000's of 2770's, 1000's of 2775's, 1000's of 2780's, 1000's of 2785's, 1000's of 2790's, 1000's of 2795's, 1000's of 2800's, 1000's of 2805's, 1000's of 2810's, 1000's of 2815's, 1000's of 2820's, 1000's of 2825's, 1000's of 2830's, 1000's of 2835's, 1000's of 2840's, 1000's of 2845's, 1000's of 2850's, 1000's of 2855's, 1000's of 2860's, 1000's of 2865's, 1000's of 2870's, 1000's of 2875's, 1000's of 2880's,

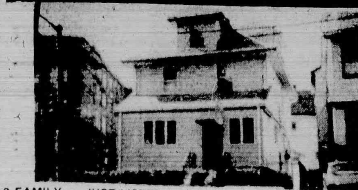


180 Centre St.  
Nutley, N.J. 07110  
667-3440

# GEORGE E. MACMUNN CO.

REALTORS

100 Woodport Road  
Sparta, N.J. 07871  
729-8727



**2 FAMILY — JUST LISTED — BLOOMFIELD** — near High School — maint. free, good condition throughout. 3 on 1st, 4 1/2 on 2nd, 1 on 3rd. Three car garage. ASKING \$179,900.



**NUTLEY PARK** — Gracious home featuring 4 bedrooms, frpl., beamed Liv. Rm. & Din. Rm. — Fam. Rm. on 1st. Completely maint. free with new thermo tilt-in windows. ASKING \$199,000.

## DO YOU KNOW WHAT YOUR HOUSE IS WORTH TODAY?

We offer a current market  
Value analysis...  
Just pick up the phone & call

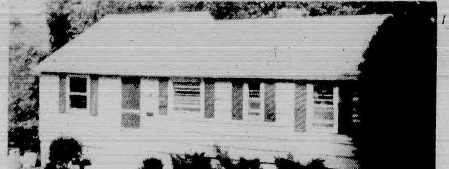
Look for this Emblem



REALTOR



**BEST BUY IN BELLEVILLE** — Lovely quiet area, formal beamed Din. Rm., 3 bedrooms, 1 1/2 baths, 2 car garage, lovely landscaped lot. ASKING \$149,900.



**SPARTA — ONE BLOCK TO LAKE** — 2 BR's lovely Liv. Rm. & DR w/frpl., 1 car garage. Dead-end Street. ASKING \$132,500.

**Century 21**  
HOMES R US  
Put Number 1 to work for you.



### "29 Years Young"

in excellent condition — features 4 BR's — 2 full tiled baths — spacious modern kit w/ dining area, finished basement — lg. yard — good location. Priced to sell at \$165,900. Call today.

Each office is independently owned and operated. Equal housing opportunity.

Find out how much your home is worth...  
call today for a free market analysis!

### 4347 APARTMENTS UNFURNISHED

**BLOOMFIELD**  
5 rms. Vacant. \$650 — heat & hot water. Kinds & pets O.K. Avail. 10/1.  
1 bdrm mod apt. Use of yard & basement. \$600 incl heat & hot water. Avail. 10/1.  
Candy for rent. Brand new 1 bdrm, w/w carpet, gar. \$605 incl heat & hot water.  
Studio Condo \$695 incl heat, hot water, brand new w.w. carpet, garage. Avail. 10/1.  
2 rms, 3rd floor of 3 family. Avail. 10/1. \$425 incl heat & hot water.  
**BELLEVILLE**  
5 1/2 rms, 2nd floor of 2 family. Washer/dryer hook-up in basement. Vacant. \$675 — heat, hot water & utility.

TO INSPECT CALL:  
Arthur L. Girard, Realtor  
**GLENWOOD**  
Real Estate Agency  
429-7380  
905 BROAD ST., BLOOMFIELD

### APARTMENTS WANTED

**ATTENTION LANDLORDS!**  
We have many qualified tenants that are screened and waiting for apartments or homes. You can choose that special tenant at no cost to you. For information call Tony Grande.

**MARZULLI REALTORS**  
264 Belleville Ave., Bloomfield, N.J.  
743-2106

**LIVE ON THE GOALS COURSE**  
A limited number of luxury apartments are now available. Come join us and enjoy the pool and tennis courts. Only conveniently located just off Hwy 90 in Plain-boro. PLEASANT HILLS AT PRINCETON. MEADOWS 1-800-799-2570.

**NUTLEY 3 rms \$525, 4 rms \$500, 5 rms \$675, 3 & 4 rm Garden Apts \$625 & 725.**  
**HOUSE RENTAL** — 7 1/2 rm Colonial 1 1/2 baths Yanticaw School \$1200 + util.

**CENTRE REALTY OF NUTLEY**  
Call Realtor  
**MONACO REALTY**  
667-8000

**LYNDHURST**  
1 bdrm mod garden apt. \$450. Call 743-2106.  
2 bdrm mod apt. \$525 incl heat & hot water.  
**Call Realtor**  
**MONACO REALTY**  
667-8000

## Century 21 WAYNE K. THOMAS REALTORS



### SPACIOUS BLOOMFIELD

Large colonial, roomy living room with fireplace, dining room, eat-in kitchen, 3 large bedrooms & sun porch. Finished knotty pine basement with bar. All set on a corner lot. Priced to sell at \$135,000. Eyes call Mark 743-4646.

**277 Broad Street Bloomfield, New Jersey**  
**(201) 429-7400**

Each office independently owned and operated  
MEMBER OF BLOOMFIELD GLEN RIDGE  
NUTLEY, BELLEVILLE BOARD OF REALTORS

### 4305 OFFICE RENTALS

**LYNDHURST**  
On Ridge Road 5 blocks from Route 3. 1,000 sq ft. office includes large main office, private office, separate entrance, parking. Newly renovated. \$1,000 a month. Avail Oct 1. 935-0077.

### 4387 RESIDENTIAL RENTALS WANTED

**ATTENTION LANDLORDS!**  
Apartments Wanted  
We Screen All Prospective Tenants.  
No Fee To Landlord  
**COSTANTINE REALTY**  
290 Franklin Ave.  
Nutley, N.J.  
Realtor 667-7070  
7347

### 4389 ROOMS

**NUTLEY**  
Furnished rooms available for immediate occupancy. From \$75 \$120 per week. Gentlemen preferred.  
**GLENWOOD REAL ESTATE AGENCY**  
429-7380

**STUDENT MALE** — Needs room & bath privileges. Willing to act as caretaker or home helper. To offset rent. Help available. Please call school. 967-0600 8:12pm or 962-8300 10:50

### 4305 OFFICE RENTALS

**BLOOMFIELD** — right off Broad St. 1000 sq ft. occupancy, full glass front, ground floor, newly renovated carpeted. (Call paid \$700 per mo. Ask for Cathy 748-4633)

**NUTLEY**  
**NEWER EXECUTIVE SUITE** — 960 SQ FT. 1 SUITE 200 ON CT. 300 Franklin Ave. **GOVEL REALTORS** 751-7500

### 4305 OFFICE RENTALS

104' front and 110' feet.  
Nearest Cross Street. Situated on the easterly side of Choptank Place, 513' feet from the southerly side of Laurel Avenue.  
A full legal description can be found in the Office of the Register of Essex County, Book 4269, page 295.  
A DEPOSIT OF 20% OF THE BID PRICE IN CASH OR CERTIFIED FUNDS IS REQUIRED AT THE TIME OF SALE.  
The approximate amount of the Judgment to be satisfied by said sale is the sum of SIXTY EIGHT THOUSAND FIVE HUNDRED FIFTY TWO DOLLARS AND FIFTY CENTS (\$68,552.00) together with the costs of this sale.

The Sheriff reserves the right to adjourn the sale from time to time as provided by law.  
Newark, N.J. August 11, 1986  
THOMAS J. D'ALESSIO, Sheriff  
JACKIE GOLDBERG-BECKER & ACKERMAN, Attorneys

### SHERIFF'S SALE

**SUPERIOR COURT OF NEW JERSEY, CHANCERY DIVISION, ESSEX COUNTY, DOCKET NO. F-1473-86, CARTERET SAVINGS AND LOAN ASSOCIATION, Plaintiff vs. ROBERT O. RIX, JR. et al DEFENDANTS.** Execution For Sale of Mortgaged Premises.  
By virtue of the above stated writ of Execution, to me directed, I shall expose for sale by Public Auction, in SHERIFF'S OFFICE, Essex County Courts Building in Newark, on Tuesday, the 23rd day of September, next, at one-thirty P.M. (Prevaling Time).  
Municipality, Village of South Orange. Street address: 112 Seton Place. Tax Lot and Block: Lot 401, Block 194. Approximate dimensions: 60 feet by 100 feet.  
Nearest cross street: Irvington Avenue. 857-55.

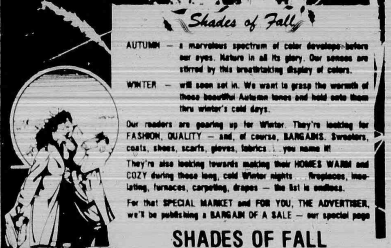
A full legal description can be found in the Office of the Register of Essex County in book 5184, page 930.

A DEPOSIT OF 20% OF THE BID PRICE IN CASH OR CERTIFIED FUNDS IS REQUIRED AT THE TIME OF SALE.  
The approximate amount of the Judgment to be satisfied by said sale is the sum of NINETY TWO THOUSAND FIVE HUNDRED EIGHTY ONE DOLLARS AND EIGHTY CENTS (\$92,581.80) together with the costs of this sale.  
The Sheriff reserves the right to adjourn the sale from time to time as provided by law.

Newark, N.J. August 18, 1986  
THOMAS J. D'ALESSIO, Sheriff  
MILLER & KINNEY, Attorneys

Belleville Times  
Aug. 28, Sept. 4, 11, 18, 1986  
Fee: \$75.20 No B86-304

## Shades of Fall



**AUTUMN** — a marvelous spectrum of color develops before our eyes. Nature in all its glory. Our senses are stirred by this breathtaking display of colors.

**WINTER** — will soon set in. We want to grasp the warmth of these beautiful Autumnal scenes and hold onto them for winter's cold days.

Our readers are gearing up for Winter. They're looking for FASHION, QUALITY — and, of course, BARGAINS. Sweaters, coats, shoes, scarfs, gloves, fabrics... you name it!

They're also looking towards making their HOMES WARM and COZY during those long, cold Winter nights. Rugs, tapestries, lanterns, candles, quilts, drapes... the list is endless.

For that SPECIAL MARKET and FOR YOU, THE ADVERTISER, we're publishing a BANG OF A SALE — our special page

### SHADES OF FALL

For the new price of \$3.44, per column inch, you can reach the readership with one of the highest degree of purchasing power and discretionary income in Essex County — THE NUTLEY PARK, BELLEVILLE TIMES and BLOOMFIELD LIFE READERS. YOUR BEST PROSPECTS.

**PUBLICATION DATES**  
Thurs., Sept. 18th  
Thurs., Sept. 25th

**HEADLINES**  
Friday, Sept. 12th  
Friday, Sept. 19th

**CALL NOW! 667-3000 CLASSIFIED**

### SHERIFF'S SALE

**SUPERIOR COURT OF NEW JERSEY, CHANCERY DIVISION, ESSEX COUNTY, DOCKET NO. F-976-85, PULASKI SAVINGS & LOAN ASSN., a corporation of the State of New Jersey, Plaintiff vs. MARIAN BUBNIAR and HELEN BUBNIAR, his wife and FIRST NATIONAL STATE BANK OF NEW JERSEY DEFENDANTS.** Execution For Sale of Mortgaged Premises.

By virtue of the above stated writ of Execution, to me directed, I shall expose for sale by Public Auction, in SHERIFF'S OFFICE, Essex County Courts Building in Newark, on Tuesday, the 23rd day of September, next, at one-thirty P.M. (Prevaling Time).

The approximate amount of the Judgment to be satisfied by said sale is the sum of FIFTY NINE THOUSAND SIX HUNDRED TWO DOLLARS AND NINETY CENTS (\$59,602.90) together with the costs of this sale.

The Sheriff reserves the right to adjourn the sale from time to time as provided by law.  
Newark, N.J. August 11, 1986  
THOMAS J. D'ALESSIO, Sheriff  
WILLIAM M. POWERS JR., Attorney

Belleville Times  
Aug. 21, 28  
Sept. 4, 11, 1986  
Fee: \$87.72

### SHERIFF'S SALE

**SUPERIOR COURT OF NEW JERSEY, CHANCERY DIVISION, ESSEX COUNTY, DOCKET NO. F-2370-84, NEW JERSEY MORTGAGE FINANCE AGENCY Plaintiff vs. KENNETH WILLIAMS et al, et al DEFENDANTS.** Execution For Sale of Mortgaged Premises.

By virtue of the above stated writ of Execution, to me directed, I shall expose for sale by Public Auction, in SHERIFF'S OFFICE, Essex County Courts Building in Newark, on Tuesday, the 23rd day of September, next, at one-thirty P.M. (Prevaling Time).

Property to be sold is located in the City of Essex Orange, County of Essex and State of New Jersey.  
Premises known as 184 North 18th Street.  
Tax Lot No. 32, Block No. 71.  
Approx. Dimensions: 108' x 31' approx.  
Nearest Cross Street: Fourth Avenue 199' x 1'

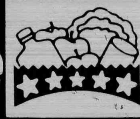
Newark, N.J. August 18, 1986  
THOMAS J. D'ALESSIO, Sheriff  
MILLER & KINNEY, Attorneys

Belleville Times  
Aug. 28, Sept. 4, 11, 18, 1986  
Fee: \$77.08 No B86-307



# THINK SAVINGS

## THINK ShopRite



ShopRite CELEBRATES  
National  
Independent  
Retail Grocer  
Week  
SEPTEMBER 7-13, 1986

**HELP WANTED**  
Many ShopRite Supermarkets have part-time positions available now. Visit your local ShopRite and apply in person. ShopRite is an equal opportunity employer.

**The Appy Place**  
**STORE SLICED LAND O' LAKES American Cheese** 1.99 lb.

STORE SLICED  
ShopRite Bologna .99 lb.  
STORE SLICED  
ShopRite Liverwurst .99 lb.  
STORE SLICED OVAL  
Hormel Spiced Ham 1.99 lb.  
STORE SLICED  
ShopRite Loaves 1.99 lb.

**The Dairy Place**  
**REGULAR OR COUNTRY STYLE Minute Maid Orange Juice** 64-oz. cart. 1.39

ASSORTED VARIETIES  
La Yogurt 3 6-oz. pints 1.00  
REG. QUARTERS MARGARINE 2-lb. pkg. .99  
Blue Bonnet  
BUTTERMILK, BUTTER OR COUNTRY STYLE  
Pillsbury Biscuits 4 2-oz. pkgs. .99  
AMERICAN  
Kraft Singles 1-lb. pkg. 1.99

**The Deli Place**  
**BEEF, MEAT OR THIN Oscar Mayer Bologna** 12-oz. pkg. .99

THIN OR REG. SLICED HAM  
Imported Sliced Ham 1-lb. pkg. 2.99  
PERDUE  
Chicken Bologna 1-lb. pkg. .79  
Sliced  
Wilson Bacon 1-lb. pkg. 1.89  
ShopRite  
Kosher Franks 1-lb. pkg. 2.49

**The Frozen Food Place**  
**ShopRite GRADE 'A' Orange Juice** 12-oz. can. 69

ASST. VARIETIES DELUXE  
On-Cor Entrees 2-lb. 1.79  
ShopRite Vegetables 2 10-oz. SOXES .99  
FOUR CHOICE PEAS OR CARROTS  
ShopRite French Fries 2-lb. bag .99  
STOUTER'S FRENCH BREAD 10-38-oz. pkg. 1.59  
ASST. FLOORS, ShopRite  
All Natural Ice Cream 9-gal. ctn. 1.99

**General Merchandise**  
% PRICE MEMO ON LADIES' SHIRT, COLORS & DESIGNS, MFG. LIST \$4.95  
**Sharpie Fashion Watches** 17.47 ea. (LIMIT QUANT. WHERE AVAIL.)

WHY PAY MORE?  
ShopRite Filler Paper 300 ct. .89  
70 CT. WIDE RULE 10 1/2" X 8"  
1-Subject Notebook 3 1.00  
WHY PAY MORE?  
Typing Paper 250 ct. .99  
FASHION COLOR SOLAR POWERED CALCULATOR SIZE WITH BATTERY POWER  
Sanyo Calculator 4.99  
12.00 MFG. RETAIL. AVAIL. (LIMIT QUANT. WHERE AVAIL.)  
Proctor Silex Mini-Iron 19.99  
NIPPON HI-GRADE T-120 VHS  
Video Blank Cassette 3.49

HERITAGE EDITION  
**Funk & Wagnalls Encyclopedia** 4.99 ea. (ON SALE THIS WEEK VOL. #2)

**VALUABLE COUPON**  
WITH THIS COUPON ONE 1/2 LB. CAN OF  
**Chock Full O' Nuts Coffee** 1.99  
Coupon good at any ShopRite Market, limit one per family. Effective Sun. Sept. 7 thru Sat. Sept. 13, 1986. SAVE .50

**Locked-In Savings** NOW THRU NOV. 8  
**Gold Medal Flour** 5-lb. bag .69  
REGULAR OR UNBLEACHED  
ALL PURPOSE BAKING FLOUR  
LOCKED-IN SAVINGS

CLEAR OR NATURAL  
**ShopRite Apple Juice** 1/2 gal. 1.89  
LOCKED-IN SAVINGS

CHICKEN OR BEEF  
**College Inn Broth** 13 1/2-oz. cans 3.00  
LOCKED-IN SAVINGS  
WHY PAY MORE?  
**Heinz Ketchup** 2-lb. jar 1.19  
LOCKED-IN SAVINGS

FROM HAWAII, ShopRite  
**Pineapple Juice** 1-qt. 1.88  
LOCKED-IN SAVINGS  
WHY PAY MORE?  
Tetley Tea Bags 1-lb. box 1.79  
ALL VARIETIES  
Hawaiian Punch 1-qt. 1.69  
REGULAR OR DIET  
Vintage Cola 2 2-lb. cans .99  
REG. OR BUTTER FLAVORED  
Crisco Shortening 4-lb. can 2.19  
ALL VARS. PROGRESSO  
Spaghetti Sauce 1-qt. .99  
ALL VARIETIES  
Kal Kan Cat Food 24 4-oz. cans 1.00  
WHITE OR ASST. 300 CT. SHEET ROLLS  
Northern Bath Tissue 4-roll. .99  
ShopRite  
Liquid Bleach 1-gal. .85

**The MEATing Place**  
**U.S.D.A. CHOICE BEEF 1st Cut Chuck Steaks** 1-lb. 89

U.S.D.A. CHOICE BEEF CHUCK  
Semi Boneless Pot Roast 1.49  
U.S.D.A. CHOICE BEEF SHOULDER  
London Broil 1.79  
ANY SIZE PKG. NOT LESS THAN  
80% Lean Ground Beef 1.49  
U.S.D.A. CHOICE BEEF CHUCK  
Boneless Beef 1.69  
U.S.D.A. CHOICE BEEF BONE IN  
Top Chuck Steak 1.69  
ANY SIZE PKG. PERDUÉ WHOLE ARB. CAGE  
Chicken Breast 1.79  
ANY SIZE PKG. PERDUÉ WHOLE W/THIGHS  
Chicken Legs .99  
ANY SIZE PKG. PERDUÉ DARK MEAT  
Chicken Thighs 1.09

**The Produce Place**  
**JUICY CALIFORNIA Seedless Grapes** 1-lb. 79

FLAVORFUL CALIF.  
Bartlett Pears .59  
EXTRA LARGE 5 1/2" CALIF.  
Honeydew Melons 1.49  
JERSEY FRESH  
Sunny Slope Peaches .59  
88 SIZE CALIF.  
Valencia Oranges 5.99  
U.S. #1  
Yellow Onions 3-lb. bag .89

**VALUABLE COUPON**  
WITH THIS COUPON ECR  
ONE 1/2 1/2 OZ. CAN OF 8 OZ. ALL VARS. SUGAR FREE  
**Crystal Light Drink Mix** 1.99  
Coupon good at any ShopRite Market, limit one per family. Effective Sun. Sept. 7 thru Sat. Sept. 13, 1986. SAVE 1.00

**The Grocery Place**  
**Regular or Diet Shasta Sodas** 12-oz. cans 8 100

HEAVY DUTY  
**Wisk Liquid Detergent** 1-qt. 4.99

ALL VARIETIES  
**Kool-Aid Coolers** 6-pk. 50-40 02 T.W. pkg. .89

WHITE OR BEIGE  
**Marcal Towels** 100 ct. roll .39

IN OIL OR WATER  
**Star-Kist White Tuna** 5-oz. can .79

CHOCK FULL O' NUTS 2.49  
ALL VARS. 10-30-40 T.W. PKG.  
Apple & Eve Juices .66  
ALL VARS. 10-30-40 T.W. PKG.  
Hi-C Fruit Drinks 1.48  
REG. OR DIET  
Ssips Drinks .44  
ALL VARIETIES  
Pillsbury Plus CAKE MIX 1.69  
ShopRite  
Sandwich Bags 200 ct. box .49  
ShopRite  
Lunch Bags 3 30-ct. bags 1.00  
RUTE OR LEMON & PEPPER  
Windex Cleaner 1-pt. 6.02 1.19

**Center Cut Rib Steaks** 1-lb. 1.89

U.S.D.A. CHOICE BEEF RIB BONE IN  
Club Steak 2.99  
U.S.D.A. CHOICE BEEF RIB  
Boneless Club Steak 3.99  
FOR PEPPER STEAK, U.S.D.A. CHOICE  
Beef Chuck Steak 2.29  
LOIN PORTION, 3 1/2" CHOPS  
Pork Chock Combo 1.79  
MEATY RIB PORTION  
Pork Loin for BBQ 1.89  
PORK CHOPS, 1/2" THICK  
Chicken Breast Cutlets 2.19  
HILLSHIRE FARM  
Knockwurst or Bratwurst 2.49

**SAVE UP TO 20% OFF**  
MFG. SUGGESTED LIST PRICE OFF  
• No Nonsense Pantyhose  
• Keds & Wrangler Socks  
• Fruit Of The Loom Men's & Ladies Styles  
• Cosmetics & Hair Care Notions  
Prices marked, reflect discount OFF of manufacturer's list price.

**The Bakery Place**  
**ShopRite SANDWICH OR ROUND TOP Batter Blend White Bread** 20-oz. loaf .59

ShopRite 12-PACK  
English Muffins 24-oz. .89  
ASSORTED SHRIMP, MULTI-PACK  
Snack Cakes 14-oz. box 1.59  
BUTTERMILK PANCAKES, multi-oz. pkg.  
Buttermilk Donuts 14-oz. box 1.19  
POTATO CHIPS, multi-oz. bag  
Potato Chips 7-oz. bag .79

**U.S. GRADE 'A' NEW ENGLAND Fresh Fillet of Scrod Cod** 1-lb. 2.29

**WEST COAST Fresh Halibut Steak** 5.99

**WEST COAST Fresh Silver Salmon Steak** 5.49  
FROZEN & THAWED, 31 TO 35 PER LB.  
Large Shrimp 6.99  
**Health & Beauty Aids**

**KIDS PUMP OR REG. PUMP Aqua-fresh Toothpaste** 8-2-oz. pump 2.19

ANY PAY MORE?  
Contac Caplets 10-ct. box 1.99  
BIO-AID PERSPIRANT  
Arid Roll-On 2-oz. can. 2.69  
MAY  
Dentu-Creme 1-oz. tube 1.69  
BIO-TIME Moisturizing Cream  
Old Spice Deodorant 2-oz. stick 1.89

**Think Savings For Baby**  
**LARGE (44%) OR MED. NEW ULTRA Pampers or Luvs Diapers** 96-ct. box 16.99

LARGE OR MEDIUM  
CONVENIENCE PACK, 44% EXTRA  
**Huggies Diapers** 48-ct. box 8.99

ShopRite LARGE (44%) OR MEDIUM  
Elastic Leg Diapers 36-ct. box 5.99  
NEW! STAINLESS LARGES, 44% EXTRA  
Baby Elastic Diapers 36-ct. box 6.99  
Ivory Snow 2-lb. box 2.79  
FOR BABY'S CALINITY  
Dreft Detergent 9-lb. box 2.89

**SHOPRITE Rx**  
**The Family Pharmacy Dept.**  
CALL US AT 235-0821

Senior Citizen Discount Policy  
Sixty-two or older... You are welcome to save a full 10% off our regular Low Prescription prices. No involved application to fill out. Simply present proof of age and we will immediately issue a Golden Age Discount Card that can be used with your first purchase. This card is for prescription purchases only and is not applicable to P.A.A. or Third Party Prescriptions.

Call us at... 235-0821

OPEN 7 DAYS: Monday-Thursday 8am-9pm; Friday 8am-10pm; Saturday 8am-6pm; Sunday 9am-2pm	<p><b>*Materna®</b> 1.60 Tablets 100's 13.99</p> <p><b>*Poly Vi Flor®</b> Tablets 0.5 mg or 1 mg 100's 7.99</p> <p><b>*Tri Vi Flor®</b> 25 mg Drops 50cc 5.99</p>	<p><b>*Stuartnatal®</b> 1+1 Tablets 100's 12.99</p> <p><b>*Poly Vi Flor®</b> 25 mg Drops 50cc 6.49</p> <p><b>*Multi Vitamin</b> Tablets w/ Fluoride 0.5 mg or 1 mg 100's 3.99</p>
--	---	---

Our pharmacists will gladly arrange transfer of an existing prescription from your present pharmacy to us.

\*Requires Prescription Expires 9/27/86  
\*Quantities less than those listed may be slightly higher in price.

Call us at... 235-0821